



# ULM Warhawks Men's Basketball

## University of Louisiana at Monroe



ULM (9-6, 3-1 SBC)  
**WARHAWKS**

Vs.



Troy (6-7, 1-3 SBC)  
**TROJANS**

Game 16

Thursday, Jan. 15, 2015 • 7:00 p.m.

Fant-Ewing Coliseum (7,000) • Monroe, La.

Live Stream: Warhawks All-Access (Online Only)

Radio: KLIP LA 105.3 FM, Nick White (PXP)

Twitter: @ULM\_MBB

### ULM Quick Notes

- The Warhawks are coming off a 3-0 week with a home win over Arkansas St. (70-61) and road wins over UT Arlington (76-73, OT) and Texas State (62-59). It marked the first time ULM has won three consecutive conference games since 2006-07

- The reigning Sun Belt Conference Player of the Week and Louisiana Co-Player of the Week, senior Marvin Williams, shot 26-33 (.798) and averaged 20.7 points over the three victories. He posted a career-high 22 points and 13 rebounds over the Red Wolves and then matched his scoring high with 22 points against the Mavs

- Over the weekend, ULM picked up a pair of wins in opposite fashion. It trailed UTA by double-figures in the second half before coming back to win in overtime. Against Texas State, it led by double-digits in the second half before the Bobcats came back to tie it, but the Warhawks held them off in the end

- ULM will put its 6-0 home record on the line on Thursday. The Warhawks have outscored opponents 495-353 at Fant-Ewing Coliseum this year, an average score of 83-59 per outing

- In ULM's last home game, Williams poured in 22 points on 9-12 shooting as the Warhawks never trailed in a 70-61 win over Arkansas State

- Senior Tylor Ongwae leads the team in scoring on the year with 13.9 points per game. He's a perfect 14-14 from the free throw line in conference play

- In conference games, Williams is averaging team-highs of 17.3 points and 8.0 rebounds per game while shooting .750 (27-36) from the field. He ranks first in the league in field goal percentage and offensive rebounds. He's third in the league in rebounding and top-5 in scoring

- On the year, the Warhawks lead the SBC in field goal percentage defense (.378), three-point field goal percentage defense (.276) and blocks (5.1 bpg). They are second in assists (14.7 apg) and assist:turnover ratio (1.2). The three-point field goal defense is also top-15 in the nation, while the field goal defense is top-30

### ULM MEN'S BASKETBALL SCHEDULE

Sat, Nov. 15	# at UAB	W, 74-65
<b>Mon, Nov. 17</b>	<b>Champion Baptist</b>	<b>W, 106-39</b>
Fri, Nov. 21	# at No. 8 Florida	L, 61-56 (OT)
Wed, Nov. 26	# vs. Coastal Carolina	L, 61-48
Thurs, Nov. 27	# vs. Robert Morris	L, 71-54
<b>Sat, Dec. 6</b>	<b>Louisiana College</b>	<b>W, 83-55</b>
<b>Tues, Dec. 9</b>	<b>Northwestern State</b>	<b>W, 82-74</b>
Sat, Dec. 13	at New Mexico	L, 54-46
<b>Tues, Dec. 16</b>	<b>Central Baptist</b>	<b>W, 78-53</b>
<b>Fri, Dec. 19</b>	<b>LSU-Alexandria</b>	<b>W, 76-71</b>
Sun, Dec. 21	at Samford	L, 64-50
Tues, Dec. 30	at Georgia State*	L, 65-45
<b>Mon, Jan. 5</b>	<b>Arkansas State*</b>	<b>W, 70-61</b>
Thurs, Jan. 8	at UT Arlington*	W, 76-73 (OT)
Sat, Jan. 10	at Texas State*	W, 62-59
<b>Thurs, Jan. 15</b>	<b>Troy*</b>	<b>7:00 PM</b>
<b>Sat, Jan. 17</b>	<b>UALR*</b>	<b>4:00 PM</b>
Mon, Jan. 19	at UL-Lafayette*	7:15 PM
<b>Thurs, Jan. 22</b>	<b>UT Arlington*</b>	<b>7:00 PM</b>
<b>Sat, Jan. 24</b>	<b>Georgia Southern*</b>	<b>4:00 PM</b>
Thurs, Jan. 29	at Troy*	7:30 PM
<b>Sat, Jan. 31</b>	<b>South Alabama*</b>	<b>4:00 PM</b>
Thurs, Feb. 5	at UALR*	7:30 PM
Sat, Feb. 7	at Georgia Southern*	6:30 PM
<b>Thurs, Feb. 12</b>	<b>UL-Lafayette*</b>	<b>7:00 PM</b>
<b>Sat, Feb. 14</b>	<b>Appalachian State*</b>	<b>2:00 PM</b>
Sat, Feb. 21	at Arkansas State*	7:05 PM
Thurs, Feb. 26	at South Alabama*	7:05 PM
Sat, Feb. 28	at Appalachian State*	2:30 PM
<b>Thurs, March 5</b>	<b>Georgia State*</b>	<b>7:00 PM</b>
<b>Sat, March 7</b>	<b>Texas State*</b>	<b>4:00 PM</b>
Thurs, March 12	SBC Championships%	TBA

All times Central and subject to change. **Bold** indicates home game; \*-Sun Belt game; %-SBC Tournament; #Battle 4 Atlantis

**We are ULM.** Please note that there are only two correct versions of our institution's name, the preferred acronym ULM and the full name, the University of Louisiana at Monroe. Any other reference, including Louisiana-Monroe, UL-Monroe, La.-Monroe, LAM, or simply Monroe, are incorrect.

### Media Relations Contacts

Robbie Kleinmuntz (Primary)	Michael Garabedian
Assistant Director	Graduate Assistant
kleinmuntz@ulm.edu	garabemc@warhawks.ulm.edu
O: 318-342-5462	O: 318-342-5461
C: 847-912-5380	C: 305-926-8420



# ULM Warhawks Men's Basketball

## University of Louisiana at Monroe



### Keith Richard

Head Coach

Fifth Year at ULM

14th Season Overall

Alma Mater: ULM (1982)

#### THE RICHARD FILE

##### COACHING HONORS

- 1999 Sun Belt Coach of the Year
- Has been part of the coaching staff for seven NCAA Tournament and three NIT teams

##### COACHING CAREER

Season	School	Position	Record
1984-85	ULM	Graduate Assistant	17-12
1985-86	ULM	Graduate Assistant	20-10/NCAA
1986-87	Marshall	Assistant Coach	25-6/NCAA
1987-88	Marshall	Assistant Coach	24-8/NIT
1988-89	Marshall	Assistant Coach	15-15
1989-90	ULM	Assistant Coach	22-8/NCAA
1990-91	ULM	Assistant Coach	25-8/NCAA
1991-92	ULM	Assistant Coach	19-10/NCAA
1992-93	ULM	Assistant Coach	26-5/NCAA
1993-94	ULM	Assistant Coach	19-9
1994-95	La. Tech	Assistant Coach	14-13
1995-96	La. Tech	Associate Head Coach	11-17
1996-97	La. Tech	Associate Head Coach	15-14
1997-98	La. Tech	Associate Head Coach	12-15
1998-99	La. Tech	Head Coach	19-9
1999-00	La. Tech	Head Coach	21-8
2000-01	La. Tech	Head Coach	17-12
2001-02	La. Tech	Head Coach	22-10/NIT
2002-03	La. Tech	Head Coach	12-15
2003-04	La. Tech	Head Coach	15-15
2004-05	La. Tech	Head Coach	14-15
2005-06	La. Tech	Head Coach	20-13/NIT
2006-07	La. Tech	Head Coach	10-20
2008-09	LSU	Assistant Coach	27-8/NCAA
2009-10	LSU	Assistant Coach	11-20
2010-11	ULM	Head Coach	7-24
2011-12	ULM	Head Coach	3-26
2012-13	ULM	Head Coach	4-23
2013-14	ULM	Head Coach	10-17
2014-15	ULM	Head Coach	9-6

##### PLAYING CAREER

- Played for ULM from 1978-82; Coached by Lenny Fant, Benny Hollis & Mike Vining
- 1979 Atlantic Sun Tournament Champions, NIT
- 1980 Atlantic Sun Regular Season Champions
- 1982 Atlantic Sun Tournament Champions, NCAA
- Two-time team captain ('81 & '82)
- Led team in assists twice

##### EDUCATION

- Bachelor's degree in general business, ULM (1982)
- Master's degree in guidance counseling, ULM (1986)

### ULM Quick Notes Continued...

- ULM is the only team in the SBC that has not allowed 80 points in a single game this season. The most the team let up was 74 points to Northwestern State in a win. It also allowed 73 points in overtime at UT Arlington in another win
- The Warhawks are 9-0 on the season when they have at least three double-figure scorers and 6-0 when they shoot over 50 percent from the field
- ULM has had five different players tally a double-double and eight different players reach double-figure scoring in a game this season
- Sophomore Nick Coppola is second in the conference in assist:turnover ratio with a 2.5 mark. He's also third in the SBC in assists with 4.6 per game. Coppola has played at least 40 minutes five times this season and 14 times in his career. He scores 9.0 points per game on the season and is shooting .393 (22-56) from three-point range
- Junior Majok Deng is the team's leading rebounder with 6.9 per contest. He ranks second in the SBC blocks (1.8 bpg) and scores 8.3 points per game
- Last Thursday's win over UTA improved Keith Richard's overtime record to 18-9 in his head coaching career which includes nine seasons at Louisiana Tech
- The Warhawks have had two players tally double-doubles in the same game twice this season, both at home (against Louisiana College and Northwestern State)
- Ongwae won Co-Louisiana Player of the Week on Dec. 22, 2014 and Sun Belt Conference Player of the Week on Nov. 18, 2014. He was named to the Preseason All-SBC Second-Team after earning four postseason awards in 2013-14
- The Warhawks have had two different players earn SBC Player of the Week honors in the same season for the first time since joining the league in 2005-06
- ULM closed out non-conference play with a winning record for the first time since 2007-08
- In the team's final non-conference home game, the Warhawks fought off LSU-Alexandria late. The game was tied, 71-71 when Ongwae converted an old-fashion three-point play with 20 seconds left to put the Warhawks up. After an LSUA turnover, ULM found Mack Foster wide-open down the court for a lay-up to close it
- ULM pulled out an 82-74 thriller over Northwestern State on Dec. 9. ULM led 36-19 in the first half and then had to overcome a 68-65 deficit with 5:45 remaining in the game. Ongwae led the team with 19 points and 10 rebounds, and junior DeMondre Harvey also etched a double-double with career-highs of 12 points and 10 rebounds
- Earlier this season, ULM took eighth-ranked Florida to overtime. Coppola hit a three-pointer with 19 seconds left to level the score at 51. ULM led 54-53 with 3:00 remaining in overtime after a three-point play from Ongwae
- The 61 points allowed versus No. 8 Florida was the lowest ULM has ever let up against a ranked opponent in program history
- ULM hung around in front of 13,710 fans at The Pit against New Mexico in a closely contested 54-46 decision. ULM went on an 11-0 run in the second half to make it a six-point game with 3:48 remaining



# ULM Warhawks Men's Basketball

## University of Louisiana at Monroe



### ULM Quick Notes Continued...

- The Warhawks posted a historic 106-39 victory over Champion Baptist in their home opener. The 67-point win broke the school record for largest margin of victory. It was also the most points ULM scored in a game since Feb. 17, 2001 in a game against UTSA. Additionally, the 67-point victory is the largest of any game in the Sun Belt Conference this season

- The Warhawks followed it up with a 28-point home win over Louisiana College as both Deng and Coppola recorded double-doubles

- Coppola dished out a career-high 12 assists against Louisiana College, the most by a player in the league in a single game this season. Coppola started all 27 games last year at point guard as a true freshman

- The Warhawks opened the season with a 74-65 victory on the road over UAB. It was the first opening night victory for ULM since Nov. 14, 2008 when it defeated Morehead State, 56-54 and the first opening night road win since Nov. 23, 1999 when it won at Samford, 67-60. Additionally, it was the largest opening night road victory since Dec. 1, 1979 when it beat Nicholls State, 79-69

- ULM has 15 home games on the 2014-15 schedule, the most since 1985-86

- Keith and Lance Richard have gone up against four other father/son duos this season. The Richard's took on Josiah/Eric Capaci at Champion Baptist, Billy/Billy Donovan at Florida, Cullen/Craig Neal at New Mexico and Ron/R.J. Hunter at Georgia State

- The Warhawks were tabbed for sixth in the Sun Belt Conference Preseason Poll. They return three starters and six players overall on a team that more-than doubled both its overall and conference win totals

- Last season, Williams notched a 19-point performance against No. 5 Kansas and outscored both Andrew Wiggins and Joel Embiid, the first and third picks of the NBA draft

- The Warhawks enter the 2014-15 season without any APR penalties for the first time in five years. ULM head coach Keith Richard has turned the program around academically since inheriting APR sanctions when he took over at the helm, and the Warhawks have won back-to-back Sun Belt Conference academic awards

- For the first time since the NCAA instituted academic progress rate (APR) scores in 2003-04, the ULM men's basketball program tallied a perfect 1,000 score in the 2013-14 season. Over the summer, ULM was the only Division I institution in the state of Louisiana to earn the Team Academic Excellence award from the NABC

- The ULM men's basketball program will honor legendary former head coach Mike Vining by raising a banner featuring the number "402" in a special halftime ceremony during the Warhawks game on Saturday, Jan. 24, 2015 against Georgia Southern at Fant-Ewing Coliseum. The 402 represents the total number of Vining's regular season and post-season victories over his 24 seasons as ULM head coach from 1981-2005

## HOME COURT ADVANTAGE

### 396-169 All-Time in Fant-Ewing Coliseum

#### ULM RECORDS IN FANT-EWING

Year	Games	Record	Pct.	Avg. Attend.
1971-72	10	6-4	.600	4,190
1972-73	11	8-3	.727	3,232
1973-74	11	8-3	.727	3,250
1974-75	12	11-1	.917	3,454
1975-76	13	10-3	.769	5,451
1976-77	13	9-4	.692	5,073
1977-78	13	10-3	.769	4,459
1978-79	16	15-1	.937	5,215
1979-80	14	10-4	.714	3,678
1980-81	16	8-8	.500	3,067
1981-82	16	13-3	.812	3,808
1982-83	14	12-2	.857	2,946
1983-84	16	11-5	.688	2,098
1984-85	13	9-4	.692	2,380
1985-86	15	14-1	.933	2,114
1986-87	13	8-5	.615	2,582
1987-88	12	10-2	.833	2,582
1988-89	12	8-4	.667	2,861
1989-90	14	13-1	.928	2,949
1990-91	14	14-0	1.000	3,327
1991-92	12	9-3	.750	2,710
1992-93	14	14-0	1.000	3,892
1993-94	14	10-4	.714	3,351
1994-95	12	9-3	.750	3,619
1995-96	11	8-3	.727	2,182
1996-97	12	9-3	.750	1,822
1997-98	11	7-4	.636	1,301
1998-99	11	7-4	.636	1,913
1999-00	14	11-3	.786	2,003
2000-01	13	9-4	.692	935
2001-02	12	12-0	1.000	3,437
2002-03	12	7-5	.583	1,412
2003-04	13	9-4	.692	1,624
2004-05	13	6-7	.462	1,296
2005-06	13	8-5	.615	793
2006-07	14	14-0	1.000	1,952
2007-08	12	5-7	.417	1,338
2008-09	14	8-6	.571	907
2009-10	14	8-6	.571	1,398
2010-11	13	4-9	.308	1,400
2011-12	13	0-13	.000	1,438
2012-13	12	3-9	.250	1,255
2013-14	12	6-6	.500	1,513
2014-15	6	6-0	1.000	1,149
<b>TOTALS</b>	<b>565</b>	<b>396-169</b>	<b>.701</b>	



# ULM Warhawks Men's Basketball

## University of Louisiana at Monroe



### WE ARE ULM

#### 12 REGULAR SEASON CHAMPIONSHIPS

1961-62 - Gulf States Conference  
 1964-65 - Gulf States Conference  
 1978-79 - Atlantic Sun Conference  
 1979-80 - Atlantic Sun Conference  
 1985-86 - Southland Conference  
 1989-90 - Southland Conference  
 1990-91 - Southland Conference  
 1992-93 - Southland Conference  
 1993-94 - Southland Conference  
 1995-96 - Southland Conference  
 1996-97 - Southland Conference  
 2006-07 - Sun Belt Conference West Division

#### NINE POST-SEASON APPEARANCES

1978-79 - NIT  
 1981-82 - NCAA Tournament  
 1985-86 - NCAA Tournament  
 1987-88 - NIT  
 1989-90 - NCAA Tournament  
 1990-91 - NCAA Tournament  
 1991-92 - NCAA Tournament  
 1992-93 - NCAA Tournament  
 1995-96 - NCAA Tournament

#### EIGHT TOURNAMENT CHAMPIONSHIPS

1978-79 - Atlantic Sun Conference  
 1981-82 - Atlantic Sun Conference  
 1985-86 - Southland Conference  
 1989-90 - Southland Conference  
 1990-91 - Southland Conference  
 1991-92 - Southland Conference  
 1992-93 - Southland Conference  
 1995-96 - Southland Conference

### Numerical Roster

No.	Player	Pos.	Ht.	Wt.	Cl.	Hometown (Previous School)
0	Williams, Marvin	C	6-8	245	Sr.	Memphis, Tenn. (NW Florida State College)
1	Brown, Alex	G	6-4	185	Fr.	Vernon, Fla. (Vernon HS)
2	Harvey, DeMondre	F	6-7	210	Jr.	Minden, La. (Pearl River CC)
3	Cooper, Prince	G	6-4	215	So.	Freeport, Bahamas (Miami-Dade College)
4	Foster, Mack	G	6-2	185	Jr.	Beulah, Miss. (East Mississippi CC)
5	Samuel, Jamaal	F	6-9	205	Jr.	New Orleans, La. (Illinois State)
10	Taylor, Roderick	F	6-8	210	Fr.	Harker Heights, Texas (Harker Heights HS)
11	Coppola, Nick	G	5-11	190	So.	Richmond, Va. (Benedictine Prep)
12	Ongwae, Tylor	F	6-7	205	Sr.	Eldoret, Kenya (Ranger College)
13	Deng, Majok	F	6-10	190	Jr.	Adelaide, Australia (Indian Hills CC)
20	Amajoyi, Chinedu	G	6-3	195	Sr.	Rancho Cucamonga, Calif. (Kilgore College)
22	Richard, Lance	G	5-10	175	RFr.	Monroe, La. (Sterlington HS)
32	Roberson, Justin	G	6-1	185	Jr.	Natchitoches, La. (Western Texas)

### COACHING STAFF

Head Coach: Keith Richard (ULM '82)  
 Assistant Coach: Ryan Cross (Buffalo '95)  
 Assistant Coach: Lonnie Cooper (Louisiana Tech '99)

Assistant Coach: J.A. Anglin (LSU Shreveport '10)  
 Graduate Assistant: Luke Richard  
 Team Manager: Gil Williams

### PRONUNCIATION

Keith/Lance/Luke RICHARD    Ree-SHARD  
 CHINEDU OMAJOYI    Chin-ih-due Om-uh-joy  
 TYLOR ONGWAE    Tie-ler Ong-why  
 MAJOK Deng    Muh-jook  
 Justin ROBERSON    Rob-er-sin  
 Nick COPPOLA    Cuh-pole-uh



### BY CLASS

Seniors (3)..... Chinedu Amajoyi  
 ..... Tylor Ongwae  
 ..... Marvin Williams  
 Juniors (5) ..... Majok Deng  
 ..... Mack Foster  
 ..... DeMondre Harvey  
 ..... Justin Roberson  
 ..... Jamaal Samuel  
 Sophomores (2) ..... Prince Cooper  
 ..... Nick Coppola  
 Freshmen (3)..... Alex Brown  
 ..... Lance Richard  
 ..... Roderick Taylor

### BY POSITION

Guards (7) ..... Chinedu Amajoyi  
 ..... Alex Brown  
 ..... Prince Cooper  
 ..... Nick Coppola  
 ..... Mack Foster  
 ..... Lance Richard  
 ..... Justin Roberson  
 Forwards (5)..... Majok Deng  
 ..... DeMondre Harvey  
 ..... Tylor Ongwae  
 ..... Jamaal Samuel  
 ..... Roderick Taylor  
 Center (1) ..... Marvin Williams

### BY STATE/COUNTRY

Australia..... Majok Deng  
 Bahamas ..... Prince Cooper  
 California..... Chinedu Amajoyi  
 Florida..... Alex Brown  
 Kenya ..... Tylor Ongwae  
 Louisiana (4) ..... DeMondre Harvey  
 ..... Lance Richard  
 ..... Justin Roberson  
 ..... Jamaal Samuel  
 Mississippi..... Mack Foster  
 Tennessee ..... Marvin Williams  
 Texas ..... Roderick Taylor  
 Virginia ..... Nick Coppola





# ULM Warhawks Men's Basketball

## University of Louisiana at Monroe



### ULM Quick Facts

Location \_\_\_\_\_ Monroe, La.  
 Enrollment \_\_\_\_\_ 8,527  
 Founded \_\_\_\_\_ 1931  
 Nickname/Mascot \_\_\_\_\_ Warhawks/Ace  
 Colors \_\_\_\_\_ Maroon & Gold  
 President \_\_\_\_\_ Dr. Nick Bruno  
 Director of Athletics \_\_\_\_\_ Brian Wickstrom  
 Conference \_\_\_\_\_ Sun Belt  
 Affiliation \_\_\_\_\_ NCAA Division I  
 All-Time Record \_\_\_\_\_ 917-816 (63rd season)  
 Winning Seasons \_\_\_\_\_ 38 (20+ wins 10 times)  
 Home Venue \_\_\_\_\_ Fant-Ewing Coliseum (7000)  
 Playing Surface \_\_\_\_\_ Maple  
 Opened \_\_\_\_\_ 1971  
 Press Row Phone \_\_\_\_\_ 318-342-6920

Head Coach \_\_\_\_\_ Keith Richard  
 Record at ULM \_\_\_\_\_ 33-96 (fifth year)  
 Career Record \_\_\_\_\_ 183-213 (14th year)  
 Assistant Coach \_\_\_\_\_ Ryan Cross  
 Assistant Coach \_\_\_\_\_ Lonnie Cooper  
 Assistant Coach \_\_\_\_\_ J.A. Anglin  
 Graduate Assistant \_\_\_\_\_ Luke Richard  
 Team Manager \_\_\_\_\_ Gil Williams  
 Athletic Trainer \_\_\_\_\_ Jeremy Teblum

Website \_\_\_\_\_ www.ulmwarhawks.com  
 Facebook \_\_\_\_\_ www.facebook.com/warhawks  
 Twitter \_\_\_\_\_ @ULM\_MBB

### All-Time Series History vs. Troy

Troy leads, 9-3  
 At ULM: Troy leads, 5-1  
 At Troy: Troy leads, 4-1  
 On Neutral Courts: ULM leads, 1-0

### ULM's Record by Starting Lineup

Coppola-Foster-Ongwae-Deng-Williams (3-0, 3-0 SBC)  
 Coppola-Roberson-Ongwae-Samuel-Deng (1-0, 0-0 SBC)  
 Coppola-Roberson-Ongwae-Deng-Harvey (3-1, 0-0 SBC)  
 Coppola-Roberson-Ongwae-Deng-Williams (2-4, 0-0 SBC)  
 Coppola-Amajoyi-Ongwae-Samuel-Harvey (0-1, 0-1 SBC)

### Where ULM Ranks Nationally...

15th in 3FG% defense (.276)  
 28th in FG% defense (.378)  
 41st in blocks (5.1 bpg)

---  
 Tylor Ongwae is 28th in FT%

### Scouting Troy

Despite some closely contested games, the Trojans are off to a 1-3 start in conference play and 6-7 overall. They dropped their first two games against Texas State (57-46) and UL-Lafayette (91-64) before taking down UT Arlington (71-66) at home. On Saturday, Troy was edged at Texas State, 77-72 even with Musa Abdul-Aleem's career-high 32 points.

In conference games, Abdul-Aleem averages 20.3 points per game and is shooting .435 (10-23) from three-point range and a perfect 17-17 from the free throw line. He's one of two Trojans averaging over 20 points a game as Wesley Person puts in 20.5 points and is 15-30 (.500) from beyond-the-arc.

On the season, Abdul-Aleem scores 16.9 points per game and Person 15.8. Kevin Thomas is the team's leading rebounder with 7.2 per game and also scores 9.2 points per outing.

A 24-year coaching veteran, Phil Cunningham enters his second season at head coach. He spent 12 seasons as an assistant coach at Mississippi State before joining the staff at WKU for one year. Cunningham's teams at Mississippi State and WKU made 11 postseason appearances in 13 years, including seven NCAA Tournament appearances, and all 12 of the recruiting classes he was involved with at Mississippi State were nationally recognized.

Cunningham was a part of five Southeastern Conference Western Division crowns, one overall conference championship and two conference tournament titles in his final nine seasons at Mississippi State, and the Bulldogs averaged over 20 wins per season since he joined the staff before the 2000-01 season.

### 2014-15 SBC Preseason

**Poll** (First-place votes in parenthesis)

- Georgia State 121 (11)
- UL-Lafayette 110
- UALR 94
- UT Arlington 75
- Arkansas State 73
- ULM 69**
- Texas State 43
- Troy 42
- Georgia Southern 38
- South Alabama 38
- Appalachian State 23

### SUN BELT CONFERENCE PRESEASON TEAMS

#### Preseason First Team All-Conference

Jelani Hewitt (Georgia Southern, Senior, Guard)  
 Ryan Harrow (Georgia State, Senior, Guard)  
 R.J. Hunter (Georgia State, Junior, Guard)  
 Shawn Long (UL Lafayette, Senior, Forward)  
 Lonnie McClanahan (UT Arlington, Senior, Guard)

#### Preseason Second Team All-Conference

Josh Hagins (UALR, Junior, Guard)  
 James White (UALR, Junior, Forward)  
 Xavian Rimmer (UL Lafayette, Senior, Guard)  
**Tylor Ongwae (ULM, Senior, Forward)**  
 Emani Grant (Texas State, Junior, Forward)

#### Preseason Third Team All-Conference

Tab Hamilton (Appalachian State, Senior, Guard)  
 Trent Wiedeman (Georgia Southern, Senior, Guard)  
 Curtis Washington (Georgia State, Senior, Forward)  
 Jamel Outler (UT Arlington, Senior, Guard)  
 Kevin Thomas (Troy, Senior, Forward)

#### Preseason Player of the Year

R.J. Hunter (Georgia State, Junior, Guard)



**SUN BELT**  
CONFERENCE



# ULM Warhawks Men's Basketball

## University of Louisiana at Monroe



### 2014-15 ULM MEN'S BASKETBALL

#### ULM Combined Team Statistics (as of Jan 10, 2015)

#### All games

Overall Stats

RECORD:	OVERALL	HOME	AWAY	NEUTRAL
ALL GAMES	9-6	6-0	3-4	0-2
CONFERENCE	3-1	1-0	2-1	0-0
NON-CONFERENCE	6-5	5-0	1-3	0-2

#	Player	gp-gs	min	avg	Total		3-Point		F-Throw		Rebounds										pts	avg
					fg-fga	fg%	3fg-fga	3fg%	ft-fa	ft%	off	def	tot	avg	pf	dq	a	to	blk	stl		
12	Ongwae, Tylor	15-15	481	32.1	77-167	.461	3-16	.188	52-59	.881	36	58	94	6.3	37	2	43	31	7	12	209	13.9
00	Williams, Marvin	14-9	291	20.8	50-84	.595	1-3	.333	27-39	.692	27	38	65	4.6	31	0	6	23	12	4	128	9.1
11	Coppola, Nick	15-15	516	34.4	47-114	.412	22-56	.393	19-30	.633	3	35	38	2.5	30	1	69	28	0	14	135	9.0
32	Roberson, Justin	15-11	377	25.1	55-122	.451	4-17	.235	17-24	.708	5	48	53	3.5	41	4	33	29	2	19	131	8.7
13	Deng, Majok	15-14	391	26.1	45-103	.437	12-41	.293	22-31	.710	26	77	103	6.9	28	0	18	21	27	10	124	8.3
05	Samuel, Jamaal	15-2	272	18.1	38-105	.362	14-52	.269	10-16	.625	9	46	55	3.7	25	0	7	17	15	8	100	6.7
04	Foster, Mack	15-3	253	16.9	29-72	.403	11-37	.297	4-9	.444	6	15	21	1.4	25	1	19	8	3	11	73	4.9
02	Harvey, DeMondre	15-5	239	15.9	26-45	.578	0-0	.000	9-16	.563	24	34	58	3.9	18	0	8	11	8	3	61	4.1
22	Richard, Lance	12-0	45	3.8	7-22	.318	6-21	.286	0-0	.000	0	4	4	0.3	4	0	0	2	1	2	20	1.7
03	Cooper, Prince	11-0	98	8.9	7-16	.438	0-0	.000	1-6	.167	6	12	18	1.6	3	0	8	6	1	2	15	1.4
20	Amajoyi, Chinedu	10-1	87	8.7	4-16	.250	0-6	.000	2-2	1.000	1	7	8	0.8	7	0	10	7	0	1	10	1.0
Team											30	18	48					4				
Total.....		15	3050		385-866	.445	73-249	.293	163-232	.703	173	392	565	37.7	249	8	221	187	76	86	1006	67.1
Opponents.....		15	3054		327-865	.378	78-283	.276	194-267	.727	179	342	521	34.7	228	-	173	180	49	90	926	61.7

TEAM STATISTICS	ULM	OPP	Date	Opponent	Score	Att.
SCORING	1006	926	11/15/14	at UAB	W 74-65	2403
Points per game	67.1	61.7	11/17/14	CHAMPION BAPTIST	W 106-39	1078
Scoring margin	+5.3	-	11/21/14	at Florida	Lot 56-61	11003
FIELD GOALS-ATT	385-866	327-865	11/26/14	vs Coastal Carolina	L 48-61	2426
Field goal pct	.445	.378	11/27/14	vs Robert Morris	L 54-71	2136
3 POINT FG-ATT	73-249	78-283	12/6/14	LOUISIANA COLLEGE	W 83-55	1053
3-point FG pct	.293	.276	12/09/14	NORTHWESTERN STATE	W 82-74	1082
3-pt FG made per game	4.9	5.2	12/13/14	at New Mexico	L 46-54	13710
FREE THROWS-ATT	163-232	194-267	12/16/14	CENTRAL BAPTIST	W 78-53	1060
Free throw pct	.703	.727	12/19/14	LSUA	W 76-71	1201
F-Throws made per game	10.9	12.9	12/21/14	at Samford	L 50-64	1053
REBOUNDS	565	521	* 12/30/14	at Georgia State	L 45-65	1371
Rebounds per game	37.7	34.7	* 01/05/15	ARKANSAS STATE	W 70-61	1418
Rebounding margin	+2.9	-	* 1/8/15	at UTA	Wot 76-73	1074
ASSISTS	221	173	* 1/10/15	at Texas State	W 62-59	1612
Assists per game	14.7	11.5				
TURNOVERS	187	180				
Turnovers per game	12.5	12.0				
Turnover margin	-0.5	-				
Assist/turnover ratio	1.2	1.0				
STEALS	86	90				
Steals per game	5.7	6.0				
BLOCKS	76	49				
Blocks per game	5.1	3.3				
ATTENDANCE	6892	36788				
Home games-Avg/Game	6-1149	7-4604				
Neutral site-Avg/Game	-	2-2281				

\* = Conference game

#### On the Season in the SBC, ULM Ranks...

First in FG percentage defense: .378 (327-865)  
 First in 3FG percentage defense: .292 (78-283)  
 First in blocked shots: 5.1 bpg  
 Second in assists: 14.7 apg  
 Second in assist:turnover ratio: 1.2  
 -----  
 Nick Coppola is second in assist:turnover ratio: 2.5  
 Tylor Ongwae is second in free throw percentage: .881 (52-59)  
 Majok Deng is second in blocks: 1.8 bpg  
 Majok Deng is third in defensive rebounds: 5.1 drpg  
 Marvin Williams is third in FG percentage: .595 (50-84)  
 Nick Coppola is third in assists: 4.6 apg

Score by Periods	1st	2nd	OT	Totals
ULM	467	525	14	1006
Opponents	394	516	16	926



# ULM Warhawks Men's Basketball

## University of Louisiana at Monroe



### 2014-15 ULM MEN'S BASKETBALL

#### ULM Combined Team Statistics (as of Jan 10, 2015)

#### Conference games

Conference Stats

RECORD:	OVERALL	HOME	AWAY	NEUTRAL
ALL GAMES	3-1	1-0	2-1	0-0
CONFERENCE	3-1	1-0	2-1	0-0
NON-CONFERENCE	0-0	0-0	0-0	0-0

#	Player	gp-gs	min	avg	Total		3-Point		F-Throw		Rebounds				pf	dq	a	to	blk	stl	pts	avg
					fg-fga	fg%	3fg-fga	3fg%	ft-fa	ft%	off	def	tot	avg								
00	Williams, Marvin	4-3	113	28.3	27-36	.750	0-0	.000	15-17	.882	14	18	32	8.0	7	0	3	12	2	0	69	17.3
13	Deng, Majok	4-3	105	26.3	15-29	.517	5-14	.357	3-6	.500	10	17	27	6.8	8	0	7	9	6	3	38	9.5
12	Ongwae, Tylor	4-4	122	30.5	10-31	.323	0-3	.000	14-14	1.000	6	15	21	5.3	9	1	10	6	3	5	34	8.5
04	Foster, Mack	4-3	93	23.3	9-26	.346	5-19	.263	2-3	.667	0	8	8	2.0	8	1	4	3	0	1	25	6.3
32	Roberson, Justin	4-0	72	18.0	11-31	.355	1-5	.200	2-4	.500	1	8	9	2.3	14	2	4	4	0	4	25	6.3
05	Samuel, Jamaal	4-1	57	14.3	8-30	.267	3-15	.200	0-1	.000	0	10	10	2.5	2	0	2	2	1	0	19	4.8
11	Coppola, Nick	4-4	145	36.2	6-23	.261	3-12	.250	3-7	.429	0	14	14	3.5	7	0	20	10	0	3	18	4.5
22	Richard, Lance	2-0	11	5.5	2-4	.500	2-4	.500	0-0	.000	0	1	1	0.5	1	0	0	1	0	0	6	3.0
02	Harvey, DeMondre	4-1	49	12.3	4-9	.444	0-0	.000	1-3	.333	4	6	10	2.5	6	0	4	2	1	1	9	2.3
03	Cooper, Prince	4-0	35	8.8	4-5	.800	0-0	.000	0-2	.000	1	4	5	1.3	2	0	3	2	0	1	8	2.0
20	Amajoyi, Chinedu	2-1	23	11.5	0-1	.000	0-1	.000	2-2	1.000	0	0	0	0.0	0	0	1	1	0	1	2	1.0
Team											9 1 10											
Total.....		4	825		96-225	.427	19-73	.260	42-59	.712	45	102	147	36.8	64	4	58	52	13	19	253	63.2
Opponents.....		4	827		89-219	.406	18-70	.257	62-86	.721	38	95	133	33.2	60	-	47	39	8	27	258	64.5

TEAM STATISTICS	ULM	OPP
SCORING	253	258
Points per game	63.2	64.5
Scoring margin	-1.2	-
FIELD GOALS-ATT	96-225	89-219
Field goal pct	.427	.406
3 POINT FG-ATT	19-73	18-70
3-point FG pct	.260	.257
3-pt FG made per game	4.8	4.5
FREE THROWS-ATT	42-59	62-86
Free throw pct	.712	.721
F-Throws made per game	10.5	15.5
REBOUNDS	147	133
Rebounds per game	36.8	33.2
Rebounding margin	+3.5	-
ASSISTS	58	47
Assists per game	14.5	11.8
TURNOVERS	52	39
Turnovers per game	13.0	9.8
Turnover margin	-3.2	-
Assist/turnover ratio	1.1	1.2
STEALS	19	27
Steals per game	4.8	6.8
BLOCKS	13	8
Blocks per game	3.3	2.0
ATTENDANCE	1418	4057
Home games-Avg/Game	1-1418	3-1352
Neutral site-Avg/Game	-	0-0

Date	Opponent	Score	Att.
* 12/30/14	at Georgia State	L 45-65	1371
* 01/05/15	ARKANSAS STATE	W 70-61	1418
* 1/8/15	at UTA	Wot 76-73	1074
* 1/10/15	at Texas State	W 62-59	1612

\* = Conference game

#### In SBC Games Only, ULM Ranks...

Second in 3FG percentage defense: .257 (18-70)

Second in defensive rebound percentage: .729

-----

Marvin Williams is first in FG%: .750 (27-36)

Marvin Williams is first in offensive rebounds: 3.5 orpg

Marvin Williams is top-5 in scoring: 17.3 ppg

Marvin Williams is third in rebounding: 8.0 rpg

Tylor Ongwae is first in FT%: 1.000 (14-14)

Nick Coppola is second in assists: 5.0 apg

Nick Coppola is top-5 in assist:turnover ratio: 2.0

Majok Deng is third in offensive rebounds: 2.5 orpg

Majok Deng is fourth in blocks: 1.5 bpg

Score by Periods	1st	2nd	OT	Totals
ULM	107	137	9	253
Opponents	96	156	6	258



# ULM Warhawks Men's Basketball

## University of Louisiana at Monroe



### 2014-15 ULM MEN'S BASKETBALL

#### ULM Team High/Low Analysis (as of Jan 10, 2015)

#### All games

#### ULM - TEAM GAME HIGHS

POINTS	106	CHAMPION BAPTIST (11/17/14)
	83	LOUISIANA COLLEGE (12/6/14)
	82	NORTHWESTERN STATE (12/09/14)
	78	CENTRAL BAPTIST (12/16/14)
	76	at UTA (1/8/15)
	76	LSUA (12/19/14)
FIELD GOALS MADE	41	CHAMPION BAPTIST (11/17/14)
	35	LOUISIANA COLLEGE (12/6/14)
FIELD GOAL ATTEMPTS	70	at UTA (1/8/15)
	69	CHAMPION BAPTIST (11/17/14)
FIELD GOAL PERCENTAGE	.594 (41-69)	CHAMPION BAPTIST (11/17/14)
	.574 (31-54)	NORTHWESTERN STATE (12/09/14)
3 PT FIELD GOALS MADE	9	at UTA (1/8/15)
	9	at Florida (11/21/14)
	9	CHAMPION BAPTIST (11/17/14)
3 PT FG ATTEMPTS	31	at UTA (1/8/15)
	25	vs Coastal Carolina (11/26/14)
	25	at Florida (11/21/14)
3 PT FG PERCENTAGE	.600 (6-10)	at Samford (12/21/14)
	.375 (9-24)	CHAMPION BAPTIST (11/17/14)
	.375 (6-16)	at UAB (11/15/14)
	.375 (3-8)	NORTHWESTERN STATE (12/09/14)
FREE THROWS MADE	17	LSUA (12/19/14)
	17	NORTHWESTERN STATE (12/09/14)
FREE THROW ATTEMPTS	24	CHAMPION BAPTIST (11/17/14)
	23	LSUA (12/19/14)
	23	NORTHWESTERN STATE (12/09/14)
FREE THROW PERCENTAGE	.909 (10-11)	at Texas State (1/10/15)
	.846 (11-13)	at New Mexico (12/13/14)
REBOUNDS	48	CHAMPION BAPTIST (11/17/14)
	47	at UTA (1/8/15)
	47	NORTHWESTERN STATE (12/09/14)
ASSISTS	21	LOUISIANA COLLEGE (12/6/14)
	21	CHAMPION BAPTIST (11/17/14)
STEALS	14	CHAMPION BAPTIST (11/17/14)
	12	LOUISIANA COLLEGE (12/6/14)
BLOCKED SHOTS	10	CHAMPION BAPTIST (11/17/14)

#### ULM Career Double-Doubles

##### Tylor Ongwae (4)

27 points, 11 rebs vs. UL-L (1/4/14)  
 27 points, 10 rebs vs. Ga. State (1/25/14)  
 16 points, 11 rebs at UL-L (2/1/14)  
 19 points, 10 rebs vs. NSU (12/9/14)\*

##### Marvin Williams (3)

13 points, 11 rebs at NSU (11/21/13)  
 11 points, 13 rebs at ASU (3/6/14)  
 22 points, 13 rebs at UTA (1/8/15)\*

##### Majok Deng (3)

14 points, 10 rebs vs. Coastal Carolina (11/26/14)\*  
 14 points, 11 rebs vs. Louisiana College (12/6/14)\*  
 11 points, 11 rebs vs. Central Baptist (12/16/14)\*

##### Nick Coppola (1)

12 points, 12 assists vs. Louisiana College (12/6/14)\*

##### DeMondre Harvey (1)

12 points, 10 rebs, vs. NSU (12/9/14)\*

\* indicates this season





# ULM Warhawks Men's Basketball

## University of Louisiana at Monroe



### SUN BELT CONFERENCE STANDINGS

As of 1/15/15

School	SBC	Pct.	Overall	Pct.	Streak
1. UL-Lafayette	4-0	1.000	10-5	.667	W4
T-2. Georgia Southern	3-1	.750	10-3	.769	W3
<b>T-2. ULM</b>	<b>3-1</b>	<b>.750</b>	<b>9-6</b>	<b>.600</b>	<b>W3</b>
T-4. Texas State	3-2	.600	9-5	.643	L1
T-4. Georgia State	3-2	.600	10-6	.625	W1
5. UT Arlington	2-2	.500	8-6	.571	L2
6. South Alabama	2-3	.400	4-11	.267	L1
T-7. Arkansas State	1-3	.250	6-7	.462	L3
T-7. Troy	1-3	.250	6-7	.462	L1
T-7. Appalachian State	1-3	.250	4-9	.308	L3
11. UALR	1-4	.200	6-9	.400	W1

#### Saturday's Results

Georgia State 77, Troy 72  
Ga. Southern 81, South Alabama 73  
ULM 62, Texas State 59  
UALR 64, Appalachian State 46  
UT Arlington 77, Arkansas State 50

#### Thursday's Games

UT Arlington at Georgia St., 6:00 PM  
Arkansas St. at App St., 6:30 PM  
UL-Lafayette at Ga. Southern, 6:30 PM  
Troy at ULM, 7:00 PM  
South Alabama at Texas St., 7:30 PM

Name	Career 10+ Points	Career 10+ Rebs	Career 10+ Asts
Tylor Ongwae	33 times (20+ 12 times)	4 times	
Nick Coppola	16 times		1 time
Marvin Williams	15 times (20+ 2 times)	3 times	
Jamaal Samuel	4 times		
Chinedu Amajoyi	3 times		
DeMondre Harvey	2 times	1 time	
Name	Season 10+ Points	Season 10+ Rebs	Season 10+ Asts
Tylor Ongwae	9 times (20+ 3 times)	1 time	
Majok Deng	8 times	3 times	
Nick Coppola	7 times		1 time
Justin Roberson	7 times		
Marvin Williams	5 times (20+ 2 times)	1 time	
Jamaal Samuel	3 times		
Mack Foster	2 times		
DeMondre Harvey	1 time	1 time	

#### Single-Game Categorical Highs 2014-15

Points	Tylor Ongwae - 25, two times, vs. CEBC/LSUA
Field Goals Made	Tylor Ongwae - 10, vs. Central Baptist
3FG Made	3, seven times
Free Throws Made	Tylor Ongwae - 9, at Texas State
Rebounds	Marvin Williams - 13, at UT Arlington
Assists	Nick Coppola - 12, vs. Louisiana College
Steals	Mack Foster/Justin Roberson - 4, vs LC/at TXST
Blocks	Majok Deng/Jamaal Samuel - 4, at UAB/vs. C. Car.
Minutes	Nick Coppola - 45, at No. 8 Florida

#### Number of times in 2014-15 a ULM student-athlete has led the team in...

Player	Points	Rebs	Assists	FGM	FGA	FTM	FTA	3FGM	3FGA	Blocks	Steals	Mins
Tylor Ongwae	6	6	5	7	9	7	6	2		2	4	4
Marvin Williams	4	3		4	3	4	6			4	1	
Nick Coppola	2		9	1		1	1	9	7		5	9
Jamaal Samuel	2	2		1	2			3	4	2	4	
Majok Deng	1	7	1	2	2	2	3	4	3	9	3	
Justin Roberson	1	2	2	2	1	2	2				6	1
DeMondre Harvey		2	1							1	2	
Mack Foster			1				1	4	2	1	4	1
Lance Richard								1	2			
Chinedu Amajoyi			1									
Prince Cooper												1

Note: If multiple student-athletes tie in a category in a single game, they all receive credit for leading the team



# ULM Warhawks Men's Basketball

## University of Louisiana at Monroe



### In ULM's Last Outing...

#### ULM Hangs On for Big Road Win at Texas State, 62-59

**SAN MARCOS, Texas** – In a game in which the ULM men's basketball program never trailed, the Warhawks jumped out to a 10-point halftime lead and then held off a hot-shooting Texas State squad in the second half for a 62-59 win on Saturday at Strahan Coliseum.

It marked the third straight victory for the Warhawks.

ULM (9-6, 3-1 SBC) held Texas State (9-5, 3-2 SBC) to just 21.4 percent (6-28) in the first half but the Bobcats shot 58.3 percent (14-24) in the second to tie the game five times.

The game was even, 50-50, when senior Tylor Ongwae scored five consecutive points to give ULM a 55-50 edge at the 3:54 mark. A three-pointer by Texas State's Wes Davis made it a 57-55 game with 2:12 left.

The Warhawks were clinging to a 61-59 lead with three seconds remaining when Texas State had the ball underneath ULM's basket. Junior Majok Deng came up with a huge steal on the inbounds play as he intercepted the pass to seal it.

Ongwae was clutch from the free throw line down the stretch and went 9-9 in the game. He finished with 17 points, eight rebounds and a pair of steals.

Senior Marvin Williams led the Warhawks in scoring for the third straight game with 18 points. He was a perfect 9-9 from the field and also grabbed six rebounds. Junior Justin Roberson scored 10 points off the bench.

The Bobcats were led by Emani Gant's 14 points. Ethan Montalvo scored 12 points.

#### Official Basketball Box Score -- Game Totals -- Final Statistics ULM vs Texas State 1/10/15 4:30 p.m. at San Marcos, Texas <Strahan Coliseum>

##### ULM 62 • 9-6, 3-1 SBC

#	Player		Total		3-Ptr		Rebounds		PF	TP	A	TO	Blk	Stl	Min
			FG-FGA	FG-FGA	FT-FTA	Off	Def	Tot							
12	Ongwae, Tylor	f	4-10	0-0	9-9	3	5	8	1	17	2	1	1	2	35
13	Deng, Majok	f	2-4	2-4	1-2	2	6	8	2	7	2	2	3	2	34
00	Williams, Marvin	c	9-9	0-0	0-0	3	3	6	2	18	1	5	0	0	31
04	Foster, Mack	g	1-7	1-6	0-0	0	1	1	2	3	1	1	0	0	29
11	Coppola, Nick	g	1-5	1-3	0-0	0	4	4	2	3	4	5	0	0	34
02	Harvey, DeMondre		0-1	0-0	0-0	1	0	1	2	0	1	0	1	0	9
03	Cooper, Prince		1-1	0-0	0-0	0	2	2	0	2	1	0	0	0	5
05	Samuel, Jamaal		1-3	0-2	0-0	0	1	1	2	2	0	1	0	0	6
32	Roberson, Justin		5-9	0-1	0-0	0	2	2	5	10	2	3	0	4	17
Team						2	0	2							
Totals			24-49	4-16	10-11	11	24	35	18	62	14	18	5	8	200

FG % 1st Half: 13-28 46.4% 2nd half: 11-21 52.4% Game: 24-49 49.0% Deadball Rebounds 1  
3FG % 1st Half: 3-11 27.3% 2nd half: 1-5 20.0% Game: 4-16 25.0%  
FT % 1st Half: 2-2 100.0 2nd half: 8-9 88.9% Game: 10-11 90.9%

##### Texas State 59 • 9-5, 3-2 SBC

#	Player		Total		3-Ptr		Rebounds		PF	TP	A	TO	Blk	Stl	Min
			FG-FGA	FG-FGA	FT-FTA	Off	Def	Tot							
01	Tilbury, Kevin	f	2-10	0-2	3-4	3	1	4	1	7	0	1	0	1	19
21	Gant, Emani	f	7-14	0-0	0-0	0	4	4	3	14	2	3	0	0	32
24	Naylor, Cameron	f	3-9	0-0	2-2	1	1	2	1	8	0	1	1	0	27
00	Brown, D.J.	g	1-3	0-2	0-0	0	2	2	1	2	3	1	0	0	28
10	Davis, Wes	g	2-5	1-3	2-4	1	2	3	2	7	0	2	0	7	36
05	Black, Ojai		0-0	0-0	0-0	0	2	2	0	0	1	1	0	1	13
15	Montalvo, Ethan		3-7	2-5	4-4	0	1	1	1	12	0	1	0	1	21
22	Bermudez, Victor		2-2	1-1	0-0	0	0	0	1	5	0	1	0	0	7
23	Weatherspoon, J.		0-2	0-0	4-4	1	0	1	3	4	0	1	0	0	10
32	Ramlal, Kendell		0-0	0-0	0-0	1	2	3	0	0	0	0	0	0	9
Team						1	2	3							
Totals			20-52	4-13	15-18	8	17	25	13	59	6	12	1	10	202

FG % 1st Half: 6-28 21.4% 2nd half: 14-24 58.3% Game: 20-52 38.5% Deadball Rebounds 0  
3FG % 1st Half: 2-9 22.2% 2nd half: 2-4 50.0% Game: 4-13 30.8%  
FT % 1st Half: 7-10 70.0% 2nd half: 8-8 100.0 Game: 15-18 83.3%

Officials: Jeremy Mosier, Frankie Bordeaux, Mitchell Ervin  
Technical fouls: ULM-None. Texas State-None.  
Attendance: 1612

Score by periods	1st	2nd	Total
ULM	31	31	62
Texas State	21	38	59

Last FG - ULM 2nd-01:22, TXST 2nd-00:03.  
Largest lead - ULM by 14 1st-04:28, TXST None.  
ULM led for 35:16, TXST led for 00:00. Game was tied for 04:44.

Points	In	Off	2nd	Fast	Bench
ULM	26	14	13	2	14
TXST	22	16	4	6	21

Score tied - 5 times.  
Lead changed - 0 times.

### The Last Time ULM Played Troy...

#### ULM Falls to Troy on Senior Day

**MONROE, La.** – Seniors Millaun Brown, Marcelis Hansberry, Jayon James, R.J. McCray and Amos Olatayo were honored before their final home game on Saturday as the ULM men's basketball program dropped a 61-46 outcome to Troy at Fant-Ewing Coliseum.

Freshman Nick Coppola led ULM (9-15, 6-10 SBC) offensively with 10 points. James grabbed a game-high nine rebounds. Junior Marvin Williams totaled nine points and seven rebounds.

Troy (10-19, 4-11 SBC) used a 24-point performance from Hunter Williams who went 6-for-10 from three-point range. Tevin Calhoun also aided the attack with 15 points.

The Trojans hit a pair of three-pointers to take an early 6-0 lead. A long-range shot by Coppola cut the deficit to 14-13 with 9:50 remaining. ULM was down just 17-15 when Troy used a 12-0 spurt to grab a 29-15 advantage with 3:34 to go. The Trojans took a 38-18 lead into the half.

ULM began the second half on a 6-0 run after a three-pointer by junior Tylor Ongwae and an old-fashion three-point play by Williams to make it a 38-24 game. Coppola nailed a shot from beyond-the-arc to trim the deficit to 43-30 with 12:36 left.

The Warhawks trailed 49-30 when McCray capitalized on back-to-back field goals to force a Troy timeout with 8:28 remaining with the score 49-34. A basket by sophomore DeMondre Harvey made it a 56-43 game with 2:26 left.

#### Official Basketball Box Score -- Game Totals -- Final Statistics Troy vs ULM 03/01/14 4:50 PM CST at Fant-Ewing Coliseum; Monroe, Louisiana

##### Troy 61 • 10-18, 5-11

#	Player		Total		3-Ptr		Rebounds		PF	TP	A	TO	Blk	Stl	Min
			FG-FGA	FG-FGA	FT-FTA	Off	Def	Tot							
01	Myers, Antoine	*	3-8	0-1	1-2	4	3	7	1	7	4	2	0	2	37
03	Mullahey, Jeff	*	2-7	1-6	0-0	2	4	6	4	5	2	0	1	0	23
11	Williams, Hunter	*	8-14	6-10	2-3	1	3	4	0	24	4	3	0	1	37
22	Calhoun, Tevin	*	4-8	2-4	5-10	2	1	3	4	15	0	1	0	0	24
32	Warren, Josh	*	0-0	0-0	1-2	0	1	1	1	1	0	0	0	2	14
04	Ford, Kelton		0-3	0-0	1-4	1	3	4	1	1	2	0	0	2	21
12	Bonny, JC		1-2	0-1	0-1	1	0	1	0	2	0	0	0	0	3
25	Thomas, Kevin		2-8	0-0	0-0	2	4	6	2	4	1	1	1	1	27
33	Hinton, Wes		1-4	0-3	0-0	0	2	2	1	2	0	1	2	0	14
Team						1	1	2							
Totals			21-54	9-25	10-22	14	22	36	14	61	13	8	4	8	200

FG % 1st Half: 13-29 44.8% 2nd half: 8-25 32.0% Game: 21-54 38.9% Deadball Rebounds 5,1  
3FG % 1st Half: 4-12 33.3% 2nd half: 5-13 38.5% Game: 9-25 36.0%  
FT % 1st Half: 8-17 47.1% 2nd half: 2-5 40.0% Game: 10-22 45.5%

##### ULM 46 • 9-15, 6-10

#	Player		Total		3-Ptr		Rebounds		PF	TP	A	TO	Blk	Stl	Min
			FG-FGA	FG-FGA	FT-FTA	Off	Def	Tot							
01	James, Jayon	*	2-5	0-0	0-2	2	7	9	4	4	3	3	0	0	25
04	McCray, RJ	*	3-6	1-3	0-0	0	2	2	0	7	1	2	0	0	27
11	Coppola, Nick	*	4-12	2-6	0-0	2	0	2	2	10	2	4	0	0	39
12	Ongwae, Tylor	*	2-14	1-6	2-2	0	2	2	4	7	1	2	1	0	32
23	Brown, Millaun	*	0-0	0-0	1-2	2	0	2	2	1	0	1	0	0	9
00	Williams, Marvin		3-6	0-0	3-3	4	3	7	4	9	2	1	0	0	28
02	Harvey, DeMondre		2-3	0-0	1-4	1	5	6	2	5	0	1	1	3	18
13	Amajoyi, Chinedu		1-3	1-3	0-0	0	3	3	1	3	1	1	0	0	18
15	Koszuta, Kyle		0-0	0-0	0-0	0	0	0	0	0	0	0	0	0	3
33	Grievess, Daniel		0-1	0-1	0-0	0	0	0	0	0	0	1	0	0	1
Team						1	4	5							
Totals			17-50	5-19	7-13	12	26	38	19	46	10	16	2	3	200

FG % 1st Half: 7-22 31.8% 2nd half: 10-28 35.7% Game: 17-50 34.0% Deadball Rebounds 4  
3FG % 1st Half: 1-9 11.1% 2nd half: 4-10 40.0% Game: 5-19 26.3%  
FT % 1st Half: 3-4 75.0% 2nd half: 4-9 44.4% Game: 7-13 53.8%

Officials: R-Jerome Hall, U1-Barry Mathis, U2-Joe Wilbert  
Technical fouls: Troy-None. ULM-James, Jayon.  
Attendance: 1376

Score by periods	1st	2nd	Total
Troy	38	23	61
ULM	18	28	46

Points	In	Off	2nd	Fast	Bench
TROY	20	16	15	2	9
ULM	24	7	8	0	17

Last FG - TROY 2nd-01:51, ULM 2nd-01:34.  
Largest lead - TROY by 20 1st-00:10, ULM None.

Score tied - 0 times.  
Lead changed - 0 times.



# ULM Warhawks Men's Basketball

## University of Louisiana at Monroe



### The Last Time ULM...

Scored 100 or more points  
 Scored 90 or more points  
 Scored 80 or more points  
 Scored fewer than 40 points  
 Held an opponent to under 50 points  
 Held an opponent to under 40 points  
 Won by 30 or more points  
 Won by 40 or more points  
 Won by 50 or more points  
 Won by 60 or more points  
 Had four double-digit scorers  
 Had five double-digit scorers  
 Had no double-digit scorers  
 Had 20 or more assists  
 Had fewer than 10 assists  
 Had 10 or more blocks  
 Had 10 or more steals  
 Had 25 or more turnovers  
 Had fewer than 10 turnovers  
 Made 30 or more field goals  
 Made 40 or more field goals  
 Made 50 or more field goals  
 Shot over 60 pct from field  
 Shot less than 20 pct from field  
 Made 10 or more 3-pointers  
 Made 15 or more 3-pointers  
 Shot over 50 pct from 3FG  
 Shot over 60 pct from 3FG  
 Shot less than 20 pct from 3FG  
 Made 20 or more free throws  
 Made 30 or more free throws  
 Shot 80-90 pct free throws  
 Shot over 90 pct free throws  
 Won on a buzzer beater  
 Lost on a buzzer beater  
 Won on the last possession  
 Lost on the last possession  
 Won in overtime  
 Won in double overtime  
 Won in triple overtime  
 Had two double-doubles in one game  
 Had two 20+ scorers in one game

106, vs. Champion Baptist (11/17/14)  
 106, vs. Champion Baptist (11/17/14)  
 82, vs. Northwestern State (12/9/14)  
 36, vs. Texas State (1/11/2014)  
 39, vs. Champion Baptist (11/17/14)  
 39, vs. Champion Baptist (11/17/14)  
 67, vs. Champion Baptist (11/17/14)  
 67, vs. Champion Baptist (11/17/14)  
 67, vs. Champion Baptist (11/17/14)  
 67, vs. Champion Baptist (11/17/14)  
 4, vs. Arkansas State (1/5/15)  
 5, vs. Northwestern State (12/9/14)  
 at Georgia State (12/30/14)  
 20, vs. Northwestern State (12/9/14)  
 6, at New Mexico (12/13/14)  
 10, vs. Champion Baptist (11/17/14)  
 12, vs. Louisiana College (12/6/14)  
 29, at Northwestern State (11/21/2013)  
 9, vs. South Alabama (2/27/2014)  
 30, vs. Central Baptist (12/16/14)  
 41, vs. Champion Baptist (11/17/14)  
 51, vs. Georgia Southern (2/8/1979)  
 .620 (31-50), at Nicholls State (11/28/2011)  
 .185 (10-54) at No. 3 Ohio State (12/27/2013)  
 10, at UT Arlington (1/9/2014)  
 15, vs. Middle Tennessee (1/24/2008)  
 .600 (6-10), at Samford (12/21/2014)  
 .643 (9-14), at Troy (1/16/2014)  
 .111 (1-9), vs. Arkansas State (1/5/15)  
 24, vs. UL-Lafayette (1/4/2014)  
 30, vs. Troy (12/31/2009)  
 .846 (11-13), at New Mexico (12/13/14)  
 .909 (10-11), at Texas State (1/10/15)  
 W, 60-58, vs. SFA (Malcolm Thomas Jumper) (11/25/2008)  
 L, 76-73, at La. Tech (Kyle Gibson 3FG) (12/2/2009)  
 W, 66-65, at UALR (Pair of defensive stands) (3/10/2014)  
 L, 65-64, vs. SFA (Zac Downing 3FG, 4 secs) (11/23/2010)  
 W, 76-73, at UT Arlington (1/8/2015)  
 W, 103-98 (2OT), vs. UL-Lafayette (1/4/2014)  
 W, 107-106 (3OT), at La. Tech (1/5/1970)  
 Tylor Ongwae & DeMondre Harvey, vs. Northwestern State (12/9/14)  
 Tylor Ongwae (25) & Amos Olatayo (20), at UT Arlington (1/9/2014)

### A ULM Player...

Had a double-double (pts-rbs)  
 Had a double-double (pts-asts)  
 Had a triple-double  
 Had 20 points or more  
 Had 30 points or more  
 Had 40 points or more  
 Had 50 points or more  
 Made 10 or more field goals  
 Made 15 or more field goals  
 Made five or more 3FG  
 Made 10 or more FT  
 Had 10 or more rebounds  
 Had 15 or more rebounds  
 Had 20 or more rebounds  
 Had 25 or more rebounds  
 Had 30 or more rebounds  
 Had 10 or more assists  
 Had 15 or more assists  
 Had five or more steals  
 Had 10 or more steals  
 Had five or more blocks  
 Had 10 or more blocks  
 Played 40 minutes or more

Marvin Williams (22 pts, 13 rebs), at UT Arlington (1/8/2015)  
 Nick Coppola (12 pts, 12 asts), vs. Louisiana College (12/6/14)  
 Wojciech Mydra (11 pts, 10 rebs, 10 blks) vs. SHSU (1/24/2002)  
 Marvin Williams (22), vs. UT Arlington (1/8/2015)  
 Amos Olatayo (30), at Northwestern State (11/21/2013)  
 Henry Steele (40), vs. Louisiana College (1/23/1971)  
 Glynn Saulters (51), vs. Nicholls State (1/1/1968)  
 Tylor Ongwae (10), vs. Central Baptist (12/16/14)  
 Mike Smith (15), vs. Houston (12/15/1999)  
 Trent Mackey (5), vs. North Texas (2/14/2013)  
 Chinedu Amajoyi (10-12), vs. Arkansas State (1/30/2014)  
 Marvin Williams (13), at UT Arlington (1/8/2015)  
 Lance Brasher (17), vs. Middle Tennessee (1/24/2008)  
 DeAndre Alexander (20), vs. Lamar (3/2/2005)  
 Calvin Natt (25), vs. Miss. State (12/5/1978)  
 Calvin Natt (31) vs. Georgia Southern (12/29/1976)  
 Nick Coppola (12), vs. Louisiana College (12/6/14)  
 Jayon James (15), at FIU (2/2/2013)  
 Tylor Ongwae (5), vs. UALR (2/15/2014)  
 Arthur Hayes (10), vs. McNeese State (1983)  
 Jayon James (5), vs. UALR (2/15/2014)  
 Wojciech Mydra (13), vs. UTSA (3/2/2002)  
 Nick Coppola (42), at UT Arlington (1/8/2015)

### MISCELLANEOUS STATS 2014-15

#### Largest halftime lead

35 (53-18), vs. Champion Baptist (11/17/14)

#### Largest halftime deficit

11 (37-26), vs. Robert Morris (11/27/14)

#### Largest halftime lead surrendered in a loss

3 (26-23), at Georgia State (12/30/14)

#### Largest halftime deficit overcome in a win

8 (28-20), at UT Arlington (1/8/15)

#### Largest lead any time

67 (106-39), vs. Champion Baptist (11/17/14)

#### Largest deficit any time

20, (65-45) at Georgia State (12/30/14)

#### Largest lead surrendered in a loss

12, at No. 8 Florida (11/21/14)

#### Largest deficit overcome in a win

13, at UT Arlington (1/8/15)

#### Most points scored in a half

53, vs. Champion Baptist (11/17/14)

#### Fewest points scored in a half

19, two times

#### Most points allowed in a half

44, two times (vs. NSU/LSUA)

#### Fewest points allowed in a half

18, first half vs. Champion Baptist (11/17/14)

#### Largest Rebounding Advantage

+27 (48-21), vs. Champion Baptist (11/17/14)

#### Largest Rebounding Disadvantage

-13 (49-36), at No. 8 Florida (11/21/14)

#### Highest Plus Turnover Differential

+13 (24-11), vs. Champion Baptist (11/17/14)

#### Highest Minus Turnover Differential

-11 (15-4), vs. NSU (12/9/14)

#### Most 3FG Made In a Game

9, three times

#### Most 3FG Allowed in a Game

10, vs. NSU (12/9/14)



# ULM Warhawks Men's Basketball

## University of Louisiana at Monroe



### 0 Marvin Williams

Senior | Center | 6-8 | 245  
Memphis, Tenn. | NW Florida State College

	Season-High	Career-High
Pts	22, two times	22, two times
FG	two times	two times
3FG	1, at Florida (11/22/14)	1, two times
FT	6, at UTA (1/8/15)	6, at UTA (1/8/15)
Ast	1, six times	2, three times
Reb	13, at UTA (1/8/15)	13, two times
Blocks	3, vs. RMU (11/27/14)	4, vs. UALR (2/15/14)
Steals	2, vs. CHBC (11/17/14)	2, vs. CHBC (11/17/14)
Min	36, vs. RMU (11/27/14)	36, vs. RMU (11/27/14)



### 2 DeMondre Harvey

Junior | Forward | 6-7 | 210  
Memphis, Tenn. | NW Florida State College

	Season-High	Career-High
Pts	12, vs. NSU (12/9/14)	12, vs. NSU (12/9/14)
FG	6, vs. NSU (12/9/14)	6, vs. NSU (12/9/14)
3FG	N/A	N/A
FT	5, vs. LSU (12/19/14)	5, vs. LSU (12/19/14)
Ast	3, vs. ASU (1/5/15)	3, vs. ASU (1/5/15)
Reb	10, vs. NSU (12/9/14)	10, vs. NSU (12/9/14)
Blocks	3, vs. CHBC (11/17/14)	3, vs. CHBC (11/17/14)
Steals	1, three times	3, vs. ASU (3/1/14)
Min	30, two times	30, two times

Opp	GS	Min	FG-FGA/Pct.	3FG-FGA	FT-FTA/PCT	O-D-T	PF-FO	A	TO	Blk	Stl	Pts/Avg
UAB	*	16	1-5/.200	0-1/.000	1-1/1.000	0-0-0	3-0	0	0	0	1	3/3.0
CH BAP	*	18	3-3/1.000	0-0/.000	5-8/.625	1-3-4	2-0	1	1	0	2	11/7.0
Florida	*	27	3-11/.273	1-1/1.000	0-0/.000	3-1-4	2-0	0	1	2	0	7/7.0
C. Car	*	6	0-1/.000	0-1/.000	0-0/.000	0-2-2	4-0	0	2	0	0	0/5.3
RMU	*	36	6-11/.545	0-0/.000	2-5/.400	2-3-5	3-0	1	1	3	1	14/7.0
La. Col		10	1-1/1.000	0-0/.000	0-0/.000	0-3-3	1-0	0	1	0	0	2/6.2
NSU		9	1-1/1.000	0-0/.000	0-0/.000	0-2-2	2-0	0	2	1	0	2/5.6
N.M.	*	18	2-4/.500	0-0/.000	2-2/1.000	3-2-5	2-0	0	2	2	0	6/5.6
CE BAP					DNP							
LSU-A		22	4-7/.571	0-0/.000	2-6/.333	2-2-4	1-0	0	0	2	0	10/6.1
Samford		16	2-4/.500	0-0/.000	0-0/.000	2-2-4	4-0	1	1	0	0	4/5.9
Ga. St.		17	1-3/.333	0-0/.000	5-6/.833	2-4-6	2-0	1	3	0	0	7/6.0
Ark. St.	*	33	9-12/.750	0-0/.000	4-5/.800	3-4-7	1-0	1	2	0	0	22/7.3
UTA	*	32	8-12/.667	0-0/.000	6-6/1.000	6-7-13	2-0	0	2	2	0	22/8.5
TXST	*	31	9-9/1.000	0-0/.000	0-0/.000	3-3-6	2-0	1	5	0	0	18/9.1
Troy												
UALR												
UL-L												
UTA												
Ga. So.												
Troy												
USA												
UALR												
Ga. So.												
UL-L												
App. St.												
Ark. St.												
USA												
App. St.												
Ga. St.												
TXST												
TBA												
<b>Totals</b>	<b>9</b>	<b>291</b>	<b>50-84/.595</b>	<b>1-3/.333</b>	<b>27-39/.692</b>	<b>27-38-65</b>	<b>31-0</b>	<b>6</b>	<b>23</b>	<b>12</b>	<b>4</b>	<b>128/9.1</b>

#### 2014-15 (SENIOR)

Reigning SBC and Co-LSWA Player of the Week after leading the team to a 3-0 record and going 26-33 (.798) FG with 20.7 ppg and 8.7 rpg... came up huge with 18 points on 9-9 shooting at Texas State... matched career-highs of 22 points and 13 rebounds in a big 76-73 overtime win over UTA and had eight of ULM's nine points in overtime and was a perfect 6-6 from the free throw line... dominating career-high performance of 22 points and nine made field goals in the win over Arkansas State and also grabbed seven rebounds... registered 14 points, six field goals made and 36 minutes in the Battle 4 Atlantis against Robert Morris... grabbed a season-high six rebounds at Georgia State... tallied 11 points on a perfect 3-for-3 from the field, grabbed four rebounds and set a career-high two steals in a win over Champion Baptist... scored 10 points with four rebounds and a pair of blocks in a victory over LSU

#### 2013-14 (JUNIOR)

Tallied a pair of double-doubles with 13 points and 10 rebounds at Northwestern State and 11 points and 13 rebounds at Arkansas State... led the team with 23 blocks, finishing top-10 in the SBC... averaged 8.5 points and 4.8 rebounds per game... shot 48.6 percent from the field (89-183) which was top-15 in the league... grabbed 2.1 offensive rebounds per game in conference play, eighth-best in the league... posted nine double-figure scoring games on the season including a career-high 19 points at No. 5 Kansas to outscore Preseason Player of the Year Andrew Wiggins... the 13 rebounds against the Red Wolves were the most by a Warhawk in a single-game on the season... turned in 14 points and nine rebounds against UT Arlington at the SBC Championships... rejected a career-high four blocks at home against UALR

Opp	GS	Min	FG-FGA/Pct.	3FG-FGA	FT-FTA/PCT	O-D-T	PF-FO	A	TO	Blk	Stl	Pts/Avg
UAB		22	2-7/.286	0-0/.000	1-2/.500	3-2-5	0-0	0	1	0	0	5/5.0
CH BAP		21	2-3/.667	0-0/.000	2-3/.667	6-3-9	1-0	0	1	3	0	9/7.0
Florida		6	0-0/.000	0-0/.000	0-0/.000	0-0-0	1-0	0	0	0	0	0/4.7
C. Car		15	0-1/.000	0-0/.000	0-0/.000	1-0-1	1-0	0	0	0	0	0/3.5
RMU		1	0-0/.000	0-0/.000	0-0/.000	0-0-0	0-0	0	0	0	0	0/2.2
La. Col	*	30	4-7/.571	0-0/.000	0-0/.000	2-7-9	1-0	2	3	1	1	8/3.2
NSU	*	30	6-6/1.000	0-0/.000	0-0/.000	1-9-10	1-0	1	2	2	0	12/4.4
N.M.		10	0-0/.000	0-0/.000	0-0/.000	1-0-1	3-0	1	1	1	0	0/3.9
CE BAP		25	4-7/.571	0-0/.000	0-0/.000	4-4-8	3-0	0	0	0	0	8/4.3
LSU-A	*	16	1-1/1.000	0-0/.000	5-5/1.000	0-2-2	0-0	0	1	0	1	7/4.6
Samford	*	14	3-4/.750	0-0/.000	0-3/.000	2-1-3	1-0	0	0	0	0	6/4.7
Ga. St.	*	20	1-4/.250	0-0/.000	1-2/.500	2-2-4	1-0	0	0	0	0	3/4.6
Ark. St.		13	2-2/1.000	0-0/.000	0-1/.000	1-3-4	2-0	3	1	0	0	4/4.5
UTA		7	1-2/.500	0-0/.000	0-0/.000	0-1-1	1-0	0	1	0	1	2/4.4
TXST		9	0-1/.000	0-0/.000	0-0/.000	1-0-1	2-0	1	0	1	0	0/4.1
Troy												
UALR												
UL-L												
UTA												
Ga. So.												
Troy												
USA												
UALR												
Ga. So.												
UL-L												
App. St.												
Ark. St.												
USA												
App. St.												
Ga. St.												
TXST												
TBA												
<b>Totals</b>	<b>5</b>	<b>239</b>	<b>26-45/.578</b>	<b>0-0/.000</b>	<b>9-16/.563</b>	<b>24-34-58</b>	<b>18-0</b>	<b>8</b>	<b>11</b>	<b>8</b>	<b>3</b>	<b>61/4.1</b>

#### 2014-15 (JUNIOR)

Posted a career performance against Northwestern State with a double-double and personal bests of 12 points and 10 rebounds in the win; matched his career-high with 30 minutes after getting the start... also earned the start and logged 30 minutes against Louisiana College; recorded eight points and nine rebounds in the contest... big outing with nine points, nine rebounds and three blocks in the win over Champion Baptist

#### 2013-14 (SOPHOMORE)

Led the team in field goal percentage with a .531 mark (34-64)... registered a career-high 11 points on four made field goals against Thomas... grabbed a career-high eight rebounds at both Ole Miss and UALR... played a career-high 25 minutes at home against WKU... career-high three steals at home against Troy... recorded 13 blocks and 13 steals on the season... made four starts and played in all 27 contests... averaged 3.1 points and 3.4 rebounds per game... led the team in rebounding in four games and in blocks in six games

#### PREVIOUS SCHOOL

Played at Pearl River Junior College in Poplarville, Miss. and averaged 6.4 points and 5.8 rebounds per game ... Played in all 25 games and made 15 starts ... Registered three double-doubles including 14 points and 11 rebounds in the final game of the season on March 8 ... Tallied a career-high 15 points and four blocks against Holmes Community College on Nov. 5 ... Shot 60.0 percent from the field on the season and 60.6 percent from the free throw line ... Will have three years of eligibility remaining at ULM.





# ULM Warhawks Men's Basketball

## University of Louisiana at Monroe



### 3 Prince Cooper

Sophomore | Guard | 6-4 | 215  
Freeport, Bahamas | Miami-Dade College

	Season-High	Career-High
Pts	3, vs. CHBC (11/17/14)	3, vs. CHBC (11/17/14)
FG	1, seven times	1, seven times
3FG	N/A	N/A
FT	1, vs. CHBC (11/17/14)	1, vs. CHBC (11/17/14)
Ast	3, vs. CHBC (11/17/14)	3, vs. CHBC (11/17/14)
Reb	5, vs. CHBC (11/17/14)	5, vs. CHBC (11/17/14)
Blocks	1, vs. CHBC (11/17/14)	1, vs. CHBC (11/17/14)
Steals	1, two times	1, two times
Min	24, vs. CHBC (11/17/14)	24, vs. CHBC (11/17/14)

Opp	GS	Min	FG-FGA/Pct.	3FG-FGA	FT-FTA/PCT	O-D-T	PF-FO	A	TO	Blk	Stl	Pts/Avg
UAB	5	0-1/.000	0-0/.000	0-0/.000	1-0-1	0-0	0	0	0	0	0	0/0.0
CH BAP	24	1-6/.167	0-0/.000	1-2/.500	2-3-5	1-0	3	2	1	1	3	3/1.5
Florida	6	1-2/.500	0-0/.000	0-0/.000	1-3-4	0-0	0	0	0	0	0	2/1.7
C. Car	12	1-1/1.000	0-0/.000	0-0/.000	0-2-2	0-0	1	1	0	0	0	2/1.8
RMU	8	0-0/.000	0-0/.000	0-0/.000	1-0-1	0-0	0	0	0	0	0	0/1.4
La. Col					DNP							
NSU					DNP							
N.M.	1	0-0/.000	0-0/.000	0-0/.000	0-0-0	0-0	0	0	0	0	0	0/1.2
CE BAP	7	0-1/.000	0-0/.000	0-2/.000	0-0-0	0-0	1	1	0	0	0	0/1.0
LSU-A					DNP							
Samford					DNP							
Ga. St.	18	1-2/.500	0-0/.000	0-2/.000	0-1-1	0-0	2	2	0	1	2	2/1.1
Ark. St.	4	1-1/1.000	0-0/.000	0-0/.000	1-0-1	0-0	0	0	0	0	0	2/1.2
UTA	8	1-1/1.000	0-0/.000	0-0/.000	0-1-1	2-0	0	0	0	0	0	2/1.3
TXST	5	1-1/1.000	0-0/.000	0-0/.000	0-2-2	0-0	1	0	0	0	0	2/1.4
Troy												
UALR												
UL-L												
UTA												
Ga. So.												
Troy												
USA												
UALR												
Ga. So.												
UL-L												
App. St.												
Ark. St.												
USA												
App. St.												
Ga. St.												
TXST												
TBA												
Totals	98	7-16/.438	0-0/.000	1-6/.167	6-12-18	3-0	8	6	1	2	15/1.4	

#### 2014-15 (SOPHOMORE)

Set nearly every career high in a win against Champion Baptist including five rebounds and three assists in 24 minutes... hit a mid-range jumpers in conference against Georgia State, Arkansas State, UT Arlington and Texas State

#### PREVIOUS SCHOOL

Played one season at Miami-Dade JC (Fla.)... averaged 10.4 points, 6.4 rebounds and 2.1 assists per game... shot an astounding 83 percent from the field... earned Dean's List honors for his achievements in the classroom

#### HIGH SCHOOL

Lettered in both basketball and track & field at Piney Woods HS (Miss.)... averaged 12 points, eight rebounds and three assists per game... named team captain as a senior... state champion in the triple jump (track & field)... earned academic honor roll and the highest chemistry and algebra II award... graduated top-15 in his class



### 4 Mack Foster

Junior | Guard | 6-2 | 185  
Beulah, Miss. | East Mississippi CC

	Season-High	Career-High
Pts	13, vs. CHBC (11/17/14)	13, vs. CHBC (11/17/14)
FG	5, vs. CHBC (11/17/14)	5, vs. CHBC (11/17/14)
3FG	3, two times	3, two times
FT	2, two times	2, two times
Ast	3, two times	3, two times
Reb	4, at UTA (1/8/15)	4, at UTA (1/8/15)
Blocks	1, three times	1, three times
Steals	4, vs. LC (12/6/14)	4, vs. LC (12/6/14)
Min	29, at TXST (1/10/15)	29, at TXST (1/10/15)

Opp	GS	Min	FG-FGA/Pct.	3FG-FGA	FT-FTA/PCT	O-D-T	PF-FO	A	TO	Blk	Stl	Pts/Avg
UAB	7	0-2/.000	0-2/.000	0-0/.000	0-0-0	1-0	0	0	1	0	0	0/0.0
CH BAP	24	5-9/.556	3-6/.500	0-0/.000	1-1-2	2-0	3	1	1	3		13/7.5
Florida	18	1-4/.250	1-2/.500	0-0/.000	0-0-0	4-0	2	0	0	3		3/5.3
C. Car	11	3-4/.750	0-1/.000	0-2/.000	2-0-2	0-0	1	0	0	0	0	6/5.5
RMU	14	3-4/.750	0-1/.000	0-2/.000	1-0-1	1-0	3	0	0	0	0	6/5.6
La. Col	18	3-5/.600	0-0/.000	2-2/1.000	0-1-1	2-0	2	0	0	4		8/6.0
NSU	14	1-6/.167	0-1/.000	0-0/.000	0-0-0	1-0	1	1	0	0	0	2/5.4
N.M.	18	2-4/.500	1-2/.500	0-0/.000	2-1-3	0-0	1	1	0	0	0	5/5.4
CE BAP	11	0-3/.000	0-1/.000	0-0/.000	0-3-3	2-0	0	1	0	0	0	0/4.8
LSU-A	12	2-3/.667	1-1/1.000	0-0/.000	0-0-0	2-0	1	1	0	0	0	5/4.8
Samford	13	0-2/.000	0-1/.000	0-0/.000	0-1-1	2-0	1	0	1	0	0	0/4.5
Ga. St.	14	2-5/.400	1-3/.333	2-2/1.000	0-1-1	0-0	1	0	0	0	0	7/4.6
Ark. St.	*	22	2-5/.400	0-2/.000	0-0/.000	0-2-2	1-0	0	1	0	1	4/4.5
UTA	*	28	4-9/.444	3-8/.375	0-1/.000	0-4-4	5-1	2	1	0	0	11/5.0
TXST	*	29	1-7/.143	1-6/.167	0-0/.000	0-1-1	2-0	1	1	0	0	3/4.9
Troy												
UALR												
UL-L												
UTA												
Ga. So.												
Troy												
USA												
UALR												
Ga. So.												
UL-L												
App. St.												
Ark. St.												
USA												
App. St.												
Ga. St.												
TXST												
TBA												
Totals	3	253	29-72/.403	11-37/.293	4-9/.444	6-15-21	25-1	19	8	3	11	73/4.9

#### 2014-15 (JUNIOR)

Earned three consecutive starts including at UT Arlington where he netted 11 points after a trio of three-pointers... became the first Warhawk to register four steals in a game on the season in the win over Louisiana College... shot 3-for-4 from the field in both games of the Battle 4 Atlantis Mainland bracket against Coastal Carolina and Robert Morris... registered a career-high 13 points and hit a trio of three-pointers in 24 minutes in a win over Champion Baptist

#### PREVIOUS SCHOOL

Played two seasons at East Mississippi CC and led the team to the Region 23 championship... guided the team to a No. 11 ranking in the NJCAA National Poll... averaged 7.1 points, 4.0 rebounds and 1.0 steals per game... hit a career-high six three-pointers in a game

#### HIGH SCHOOL

Lettered in both basketball and track & field at West Bolivar HS... named Co-MVP All-State and Best Offensive Player... earned All-Area MVP, First-Team and Best Defensive Player... guided the Eagles to the state championship... averaged 15 points, six rebounds, three steals and two blocks per game... dunked on Johnny O'Bryant III, who was drafted by the Milwaukee Bucks, his freshman year off a put-back



# ULM Warhawks Men's Basketball

## University of Louisiana at Monroe



### 5 Jamaal Samuel

Junior | Forward | 6-9 | 205  
New Orleans, La. | Illinois State

	Season-High	Career-High
Pts	18, vs. CHBC (11/17/14)	18, vs. CHBC (11/17/14)
FG	7, vs. CHBC (11/17/14)	7, vs. CHBC (11/17/14)
3FG	3, vs. CHBC (11/17/14)	3, vs. CHBC (11/17/14)
FT	4, vs. NSU (12/9/14)	4, vs. NSU (12/9/14)
Ast	2, two times	2, three times
Reb	7, vs. NSU (12/9/14)	8, vs. Bradley (2/15/14)
Blocks	4, vs. C. Carolina (11/26/14)	4, two times
Steals	2, two times	2, two times
Min	27, at UNM (12/13/14)	27, at UNM (12/13/14)

Opp	GS	Min	FG-FGA/Pct.	3FG-FGA	FT-FTA/PCT	O-D-T	PF-FO	A	TO	Blk	Stl	Pts/Avg
UAB		17	1-4/.250	1-3/.333	0-0/.000	0-2-2	3-0	2	2	0	1	3/3.0
CH BAP		20	7-12/.583	3-6/.500	1-2/.500	1-5-6	1-0	0	2	2	0	18/10.5
Florida		22	3-10/.300	3-10/.300	0-0/.000	1-5-6	3-0	0	1	0	1	9/10.0
C. Car		23	1-4/.250	1-4/.250	0-0/.000	0-2-2	2-0	1	1	4	1	3/8.3
RMU		14	1-5/.200	1-4/.250	1-2/.500	0-5-5	2-0	1	4	0	1	4/7.4
La. Col		11	1-6/.167	0-1/.000	0-0/.000	2-0-2	2-0	0	0	1	0	2/6.5
NSU		14	4-8/.500	0-0/.000	4-5/.800	3-4-7	3-0	0	0	3	0	12/7.3
N.M.		27	2-7/.286	0-4/.000	2-2/1.000	0-2-2	0-0	0	0	0	2	6/7.1
CE BAP	*	21	1-5/.200	0-1/.000	1-2/.500	0-2-2	2-0	0	2	2	2	3/6.7
LSU-A		21	4-6/.667	0-2/.000	0-0/.000	2-3-5	1-0	1	2	1	0	8/6.8
Samford		25	5-8/.625	2-2/1.000	1-2/.500	0-6-6	4-0	0	1	1	0	13/7.4
Ga. St.	*	26	4-12/.333	1-4/.250	0-1/.000	0-5-5	0-0	2	1	0	0	9/7.5
Ark. St.		13	2-7/.286	1-4/.250	0-0/.000	0-0-0	0-0	0	0	1	0	5/7.3
UTA		12	1-8/.125	1-5/.200	0-0/.000	0-4-4	0-0	0	0	0	0	3/7.0
TXST		6	1-3/.333	0-2/.000	0-0/.000	0-1-1	2-0	0	1	0	0	2/6.7
Troy												
UALR												
UL-L												
UTA												
Ga. So.												
Troy												
USA												
UALR												
Ga. So.												
UL-L												
App. St.												
Ark. St.												
USA												
App. St.												
Ga. St.												
TXST												
TBA												
<b>Totals</b>	<b>2</b>	<b>272</b>	<b>38-105/.362</b>	<b>14-52/.269</b>	<b>10-16/.625</b>	<b>9-46-.55</b>	<b>25-0</b>	<b>7</b>	<b>17</b>	<b>15</b>	<b>8</b>	<b>100/6.7</b>

#### 2014-15 (JUNIOR)

Netted 13 points including a pair of three-pointers and pulled down six rebounds against Samford... registered 12 points and grabbed a season-high seven rebounds in the win over NSU... set career highs in points (18), field goals made (7) and three-pointers made (3) in a win over Champion Baptist... earned the start against Central Baptist and had a pair of blocks and steals... led the team with nine points at Georgia State

#### 2013-14 (SOPHOMORE) ILLINOIS STATE

Played in 26 games with one start... ranked second on the team and No. 5 in the Missouri Valley Conference with 0.9 blocks per game... netted four points with four rebounds and three blocks in the loss at Southern Illinois (March 1)... grabbed a career-best eight rebounds and scored four points in the win over Bradley (Feb. 15)... blocked a career-best four shots and collected six rebounds in the overtime loss at Evansville (Feb. 12)... netted nine points on 3-for-4 shooting in the loss at Loyola (Feb. 9)... scored a career-high 10 points on a career-best five field goals (5-for-5) in the win over Northern Iowa (Feb. 5)... made his first-career start and scored four points during a career-high 24 minutes in the win over Drake (Feb. 1)... registered the first two blocks of his career in the win over Chicago State (Dec. 4)... scored nine points on 4-for-6 shooting with five rebounds in the loss at No. 14 VCU (Nov. 8)

#### 2012-13 (FRESHMAN) PRIOR TO ILLINOIS STATE

Helped guide South Plains College to a 22-8 overall record and an 11-5 mark in the Western Junior College Athletic Conference (WJAC) as a freshman in 2012-13... shot 46.7 percent from the field



### 11 Nick Coppola

Sophomore | Guard | 5-11 | 195  
Richmond, Va. | Benedictine Prep

	Season-High	Career-High
Pts	15, at Samford (12/21/14)	16, at GSU (2/20/14)
FG	6, two times	6, three times
3FG	3, three times	4, at GSU (2/20/14)
FT	4, at UNM (12/13/14)	5, at KU (11/8/13)
Ast	12, vs. LC (12/6/14)	12, vs. LC (12/6/14)
Reb	5, vs. NSU (12/9/14)	6, vs. WKU (1/23/14)
Blocks	N/A	N/A
Steals	3, vs. LC (12/6/14)	3, vs. LC (12/6/14)
Min	45, at Florida (11/21/14)	45, at Florida (11/21/14)

Opp	GS	Min	FG-FGA/Pct.	3FG-FGA	FT-FTA/PCT	O-D-T	PF-FO	A	TO	Blk	Stl	Pts/Avg
UAB	*	33	5-8/.625	3-5/.600	1-2/.500	0-4-4	0-0	6	2	0	1	14/14.0
CH BAP	*	12	2-2/1.000	1-1/1.000	2-4/.500	0-2-2	1-0	4	0	0	1	7/10.5
Florida	*	45	3-10/.300	3-5/.600	2-2/1.000	0-1-1	3-0	2	1	0	1	11/10.7
C. Car	*	37	2-9/.222	1-5/.200	0-0/.000	0-1-1	2-0	7	0	0	0	5/9.3
RMU	*	39	2-8/.250	2-6/.333	0-0/.000	1-2-3	2-0	2	2	0	1	6/8.6
La. Col	*	31	6-9/.667	0-2/.000	0-2/.000	0-0-0	1-0	12	4	0	3	12/9.2
NSU	*	40	4-9/.444	2-5/.400	3-4/.750	1-4-5	3-0	6	2	0	2	13/9.7
N.M.	*	29	2-8/.250	1-4/.250	4-4/1.000	0-2-2	5-1	0	1	0	0	9/9.6
CE BAP	*	28	4-5/.800	2-3/.667	2-2/1.000	0-1-1	3-0	2	2	0	2	12/9.9
LSU-A	*	40	5-11/.455	1-4/.250	2-3/.667	0-3-3	1-0	6	1	0	0	13/10.2
Samford	*	37	6-12/.500	3-4/.750	0-0/.000	1-1-2	2-0	2	3	0	0	15/10.6
Ga. St.	*	29	2-4/.500	2-3/.667	0-0/.000	0-4-4	1-0	4	1	0	2	6/10.3
Ark. St.	*	40	1-5/.200	0-1/.000	1-2/.500	0-4-4	2-0	6	1	0	0	3/9.7
UTA	*	42	2-9/.222	0-5/.000	2-5/.400	0-2-2	2-0	7	3	0	1	6/9.4
TXST	*	34	1-5/.200	1-3/.333	0-0/.000	0-4-4	2-0	4	5	0	0	3/9.0
Troy												
UALR												
UL-L												
UTA												
Ga. So.												
Troy												
USA												
UALR												
Ga. So.												
UL-L												
App. St.												
Ark. St.												
USA												
App. St.												
Ga. St.												
TXST												
TBA												
<b>Totals</b>	<b>15</b>	<b>516</b>	<b>47-114/.412</b>	<b>22-56/.393</b>	<b>19-30/.633</b>	<b>3-35-.38</b>	<b>30-1</b>	<b>70</b>	<b>28</b>	<b>0</b>	<b>14</b>	<b>135/9.0</b>

#### 2013-14 College Sports Madness SBC Freshman of the Year

#### 2014-15 (SOPHOMORE)

Has started at point guard in every game of his career... shooting 39.3 percent from three-point range (22-56)... season-high 15 points at Samford... recorded 13 points vs. LSU-A... tallied career-highs of 12 assists and three steals against Louisiana College and also had a double-double with 12 points... posted 12 points on four-for-five shooting against Central Baptist... registered 13 points in 40 minutes against NSU... dished out seven assists against Coastal Carolina at the Battle 4 Atlantis... netted 11 points on a trio of three-pointers, including one in the final seconds of regulation to send the game to overtime against No. 8 Florida, and played a career-high 45 minutes... registered 14 points, including a trio of three-pointers in the second half, to go along with his six assists in a win at UAB... led the team with nine points at New Mexico

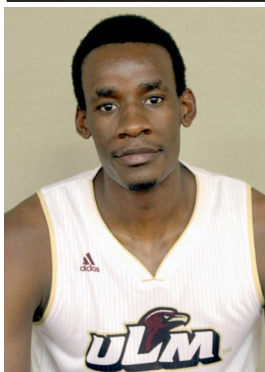
#### 2013-14 (FRESHMAN)

One of two players to start all 27 games for the Warhawks... led the team in minutes with 33.3 per game... played 40 minutes nine times and tied the school record of five in a row set in 1999-2000 by Maurice Bell... in conference play, ranked third in the league in minutes (36.1 mpg), seventh in three-point field goal percentage (.407) and top-10 in assists (2.9 apg)... tallied nine double-figure scoring games including a career-high 16 points at Georgia State where he hit four three-pointers... drained a career-high six field goals at UALR in the regular season finale and scored 15 points... dished out a career-high eight assists in an overtime victory at Northwestern State... pulled down a career-high six rebounds at home versus WKU... scored 10 points in the season opener at No. 5 Kansas... led the team in minutes in 12 games and assists in 10 games... averaged 6.9 points and 3.3 assists per game on the year



# ULM Warhawks Men's Basketball

## University of Louisiana at Monroe



### 12 Tylor Ongwae

Senior | Forward | 6-7 | 205  
Eldoret, Kenya | Ranger College

	Season-High	Career-High
Pts	25, vs. two times	27, two times
FG	10, vs. CEBC (12/16/14)	11, vs. ULL (1/4/14)
3FG	1, three times	4, at UTA (1/9/14)
FT	9, at TXST (1/10/15)	9, three times
Ast	9, vs. NSU (12/9/14)	9, vs. NSU (12/9/14)
Reb	10, vs. NSU (12/9/14)	11, two times
Blocks	2, two times	3, vs. ULL (1/4/14)
Steals	2, two times	5, vs. UALR (2/15/14)
Min	39, two times	46, vs. ULL (1/4/14)



### 13 Major Deng

Junior | Forward | 6-10 | 190  
Adelaide, Australia | Indian Hills CC

	Season-High	Career-High
Pts	15, at UTA (1/8/15)	15, at UTA (1/8/15)
FG	6, at UTA (1/8/15)	6, at UTA (1/8/15)
3FG	3, at UTA (1/8/15)	3, at UTA (1/8/15)
FT	5, vs. CEBC (12/16/14)	5, vs. CEBC (12/16/14)
Ast	2, seven times	2, seven times
Reb	11, two times	11, two times
Blocks	4, at UAB (11/15/14)	4, at UAB (11/15/14)
Steals	2, three times	2, three times
Min	35, two times	35, two times

Opp	GS	Min	FG-FGA/Pct.	3FG-FGA	FT-FTA/PCT	O-D-T	PF-FO	A	TO	Blk	Stl	Pts/Avg
UAB	*	34	8-17/.471	0-0/.000	2-2/1.000	3-6-9	5-1	2	3	0	1	18/18.0
CH BAP	*	12	8-10/.800	0-0/.000	0-0/.000	4-1-5	0-0	0	0	1	2	16/17.0
Florida	*	39	8-14/.585	0-1/.000	3-6/.625	3-5-8	4-0	3	3	2	0	19/17.7
C. Car	*	28	3-10/.300	0-3/.000	1-1/1.000	0-4-4	1-0	2	3	0	0	7/15.0
RMU	*	32	2-6/.333	0-0/.000	3-3/1.000	3-1-4	3-0	1	2	1	1	7/13.4
La. Col	*	30	9-15/.600	0-0/.000	4-5/.800	6-3-9	2-0	1	3	0	1	22/14.8
NSU	*	39	6-8/.750	0-0/.000	7-8/.875	2-8-10	3-0	9	4	0	0	19/15.4
N.M.	*	30	2-11/.182	1-3/.333	3-4/.750	2-5-7	3-0	1	2	0	0	8/14.5
CE BAP	*	38	10-16/.625	1-3/.333	4-4/1.000	2-3-5	2-0	6	1	0	1	25/15.7
LSU-A	*	38	9-15/.600	1-2/.500	6-6/1.000	2-4-6	3-0	4	2	0	1	25/16.6
Samford	*	39	2-14/.143	0-1/.000	5-6/.833	3-3-6	2-0	4	2	0	0	9/15.9
Ga. St.	*	22	0-7/.000	0-2/.000	0-0/.000	0-0-0	3-0	2	1	0	1	0/14.6
Ark. St.	*	36	4-7/.571	0-0/.000	2-2/1.000	1-6-7	0-0	1	3	2	1	10/14.2
UTA	*	29	2-7/.286	0-1/.000	3-3/1.000	2-4-6	5-1	5	1	0	1	7/13.7
TXST	*	35	4-10/.400	0-0/.000	9-9/1.000	3-5-8	1-0	2	1	1	2	17/13.9
Troy												
UALR												
UL-L												
UTA												
Ga. So.												
Troy												
USA												
UALR												
Ga. So.												
UL-L												
App. St.												
Ark. St.												
USA												
App. St.												
Ga. St.												
TXST												
TBA												
<b>Totals</b>	<b>15</b>	<b>481</b>	<b>77-167/.461</b>	<b>3-16/.188</b>	<b>52-59/.881</b>	<b>36-58-94</b>	<b>37-2</b>	<b>43</b>	<b>31</b>	<b>7</b>	<b>12</b>	<b>209/13.9</b>

Opp	GS	Min	FG-FGA/Pct.	3FG-FGA	FT-FTA/PCT	O-D-T	PF-FO	A	TO	Blk	Stl	Pts/Avg
UAB	*	25	5-9/.556	2-4/.500	1-2/.500	1-4-5	1-0	2	0	4	2	13/13.0
CH BAP	*	20	2-4/.500	0-2/.000	3-3/1.000	0-6-6	2-0	2	2	2	1	7/10.0
Florida	*	35	1-7/.143	1-5/.200	0-0/.000	1-8-9	2-0	1	1	0	0	3/7.7
C. Car	*	35	5-10/.500	2-6/.333	2-2/1.000	1-9-10	2-0	0	0	3	0	14/9.3
RMU	*	19	0-4/.000	0-2/.000	2-2/1.000	1-0-1	3-0	0	2	0	0	2/7.8
La. Col	*	29	5-9/.556	1-2/.500	3-6/.500	2-9-11	2-0	2	2	2	1	14/8.8
NSU	*	26	5-10/.500	1-1/1.000	3-4/.750	3-4-7	1-0	1	1	2	0	14/9.6
N.M.	*	26	3-8/.375	0-4/.000	0-0/.000	2-4-6	4-0	1	0	1	2	6/9.1
CE BAP	*	34	3-7/.429	0-0/.000	5-6/.833	4-7-11	2-0	2	3	3	1	11/9.3
LSU-A	*	21	1-2/.500	0-0/.000	0-0/.000	1-6-7	0-0	0	1	3	0	2/8.6
Samford	*	16	0-4/.000	0-1/.000	0-0/.000	0-3-3	1-0	0	0	1	0	0/7.8
Ga. St.	*	17	3-9/.333	0-2/.000	0-1/.000	4-4-8	1-0	1	1	1	0	6/7.7
Ark. St.	*	20	4-7/.571	0-2/.000	2-3/.667	1-5-6	4-0	2	3	0	1	10/7.8
UTA	*	34	6-9/.667	3-6/.500	0-0/.000	3-2-5	1-0	2	3	2	0	15/8.4
TXST	*	34	2-4/.500	2-4/.500	1-2/.500	2-6-8	2-0	2	2	3	2	7/8.3
Troy												
UALR												
UL-L												
UTA												
Ga. So.												
Troy												
USA												
UALR												
Ga. So.												
UL-L												
App. St.												
Ark. St.												
USA												
App. St.												
Ga. St.												
TXST												
TBA												
<b>Totals</b>	<b>14</b>	<b>391</b>	<b>45-103/.437</b>	<b>12-41/.293</b>	<b>22-31/.710</b>	<b>26-77-103</b>	<b>28-0</b>	<b>18</b>	<b>21</b>	<b>27</b>	<b>10</b>	<b>124/8.3</b>

2013-14 All-Conference Third-Team | 2013-14 NABC All-District Second-Team  
2013-14 All-Louisiana Third-Team | 2013-14 College Sports Madness SBC Fourth-Team

#### 2014-15 (SENIOR)

Scored 17 points on a perfect 9-9 FTs at Texas State... season-high 25 points vs. Central Baptist and also had six assists and five rebounds... matched his season-high with 25 points against LSU-A... tallied a double-double with 19 points and 10 rebounds vs. NSU and neared a triple-double with a career-high nine assists... neared a double-double with 22 points and nine rebounds vs. Louisiana College... poured in 19 points and grabbed eight rebounds in an overtime thriller against No. 8 Florida and head coach Billy Donovan said he was the best player on the court... won SBC Player of the Week, College Sports Madness SBC Player of the Week and Warhawk of the Week on Nov. 18, 2014... drained 16 points in just 12 minutes on 8-for-10 shooting against Champion Baptist and grabbed five rebounds... netted 18 points in a victory over UAB and neared a double-double with nine rebounds

#### 2013-14 (JUNIOR)

Became just the second ULM student-athlete in school history to earn All-Conference honors from the Sun Belt since joining the league in 2006-0... finished fourth in the league in scoring with 17.5 points per game and reached double-figures in 17 of 18 SBC contests... recorded double-digits in 24 of 27 games on the season and played at least 40 minutes three times... registered at least 20 points nine times... posted three double-doubles, with a career-high 27 points against both UL-L and Georgia State at home... led the team in scoring in 17 games... notched a career-high five steals at home vs. UALR, the most by a Warhawk in a single game on the season... played a career-high 46 minutes in the overtime win over UL-L and made a career-high 11 FG's... etched a team-high 20 points against UTA at the SBC Championships... one of two players to start all 27 games on the season... second on the team in rebounds (5.8 rpg), three-pointers made (27), blocks (19) and steals (30)... named to the NABC Honors Court for outstanding achievement in the classroom

#### JUNIOR (2014-15)

Netted a career-high 15 points on 6-9 shooting including a trio of three-pointers in an overtime win over UT Arlington... posted a double-double with 11 points and 11 rebounds in the win over Central Baptist... recorded 14 points, seven rebounds and two blocks and hit a big three-pointer in the end to defeat Northwestern State... tallied a double-double with 14 points and a career-high 11 rebounds in the win over Louisiana College... registered a double-double with 14 points and 10 rebounds against Coastal Carolina in the Battle 4 Atlantis... poured in 13 points, including a pair of three-pointers, in a win over UAB and also blocked four shots

#### PREVIOUS SCHOOL

Led Indian Hills Community College to the 2014 Regional and District Championships... guided the program to a 34-3 record in 2014 and a combined 60-7 record in his two years... hit a three-pointer against Southeastern for the win in double overtime in 2013... netted a career-high 16 points against John Wood CC



# ULM Warhawks Men's Basketball

## University of Louisiana at Monroe



### 20 Chinedu Amajoyi

Senior Guard | 6-3 | 195  
Rancho Cucamonga, Calif. | Kilgore College

	Season-High	Career-High
Pts	8, vs. CHBC (11/17/14)	12, vs. USA (2/27/14)
FG	4, vs. CHBC (11/17/14)	4, vs. USA (2/27/14)
3FG	N/A	3, two times
FT	2, at GSU (12/30/14)	10, vs. ASU (1/30/14)
Ast	6, vs. CHBC (11/17/14)	6, vs. CHBC (11/17/14)
Reb	4, at UAB (11/15/14)	8, two times
Blocks	N/A	1, two times
Steals	1, at GSU (12/30/14)	2, two times
Min	19, two times	36, at ASU (3/6/14)

Opp	GS	Min	FG-FGA/Pct.	3FG-FGA	FT-FTA/PCT	O-D-T	PF-FO	A	TO	Blk	Stl	Pts/Avg
UAB	8	0-3/.000	0-1/.000	0-0/.000	1-3-4	1-0	1	2	0	0	0	0/0.0
CH BAP	19	4-7/.571	0-2/.000	0-0/.000	0-2-2	3-0	6	0	0	0	0	8/4.0
Florida					DNP							
C. Car	3	0-0/.000	0-0/.000	0-0/.000	0-0-0	0-0	0	1	0	0	0	0/2.7
RMU	1	0-0/.000	0-0/.000	0-0/.000	0-0-0	0-0	0	0	0	0	0	0/2.0
La. Col	10	0-1/.000	0-1/.000	0-0/.000	0-0-0	1-0	1	2	0	0	0	0/1.6
NSU					DNP							
N.M.	8	0-1/.000	0-0/.000	0-0/.000	0-1-1	0-0	1	1	0	0	0	0/1.3
CE BAP	2	0-2/.000	0-1/.000	0-0/.000	0-0-0	1-0	0	0	0	0	0	0/1.1
LSU-A					DNP							
Samford	13	0-1/.000	0-0/.000	0-0/.000	0-1-1	1-0	0	0	0	0	0	0/1.0
Ga. St.	* 19	0-0/.000	0-0/.000	2-2/1.000	0-0-0	0-0	1	1	0	1	2	2/1.1
Ark. St.					DNP							
UTA	4	0-1/.000	0-1/.000	0-0/.000	0-0-0	0-0	0	0	0	0	0	0/1.0
TXST					DNP							
Troy												
UALR												
UL-L												
UTA												
Ga. So.												
Troy												
USA												
UALR												
Ga. So.												
UL-L												
App. St.												
Ark. St.												
USA												
App. St.												
Ga. St.												
TXST												
TBA												
<b>Totals</b>	<b>1</b>	<b>87</b>	<b>4-16/.250</b>	<b>0-6/.000</b>	<b>2-2/1.000</b>	<b>1-7-8</b>	<b>7-0</b>	<b>10</b>	<b>8</b>	<b>0</b>	<b>1</b>	<b>10/1.0</b>

#### 2014-15 (SENIOR)

Scored eight points in 19 minutes in a win over Champion Baptist

#### 2013-14 (JUNIOR)

Finished top-10 in the league in three-point field goal percentage at .405 (15-37)... started in 11 of ULM's last 12 games and doubled his scoring average in that span... posted career-highs of 12 points and eight rebounds against South Alabama at home... became the only ULM student-athlete to hit 10 free throws in a game on the season as he went 10-12 at home against Arkansas State... registered three double-figure scoring games... played a career-high 36 minutes at Arkansas State and pulled down eight rebounds... drained a trio of three-pointers at both Texas State and Georgia State... averaged 4.1 points per game and made 22 appearances

#### PREVIOUS SCHOOL

Played two seasons at Kilgore College and led the Rangers to a 27-6 overall record and an East Texas JUCO Conference Championship ... Also guided Kilgore to the quarterfinals of the 2013 National Junior College Athletic Association National Tournament and started every game ... Averaged 5.9 points, 2.7 rebounds and 1.9 assists in 33 appearances ... Tallied five double-figure scoring games including a career-high 17 points on two separate occasions ... Shot .807 percent from the free-throw line

#### HIGH SCHOOL

An All-Conference honoree at Los Osos High School ... Averaged 15 points and seven rebounds per game while shooting .857 from the free throw line ... 1,000 point scorer in his career



### 22 Lance Richard

R-Freshman | Guard | 5-10 | 175  
Monroe, La. | Sterlington HS

	Season-High	Career-High
Pts	8, vs. CHBC (11/17/14)	8, vs. CHBC (11/17/14)
FG	3, vs. CHBC (11/17/14)	3, vs. CHBC (11/17/14)
3FG	2, vs. CHBC (11/17/14)	2, vs. CHBC (11/17/14)
FT	N/A	N/A
Ast	N/A	N/A
Reb	3, vs. CHBC (11/17/14)	3, vs. CHBC (11/17/14)
Blocks	1, vs. RMU (11/17/14)	1, vs. RMU (11/17/14)
Steals	1, two times	1, two times
Min	15, vs. CHBC (11/17/14)	15, vs. CHBC (11/17/14)

Opp	GS	Min	FG-FGA/Pct.	3FG-FGA	FT-FTA/PCT	O-D-T	PF-FO	A	TO	Blk	Stl	Pts/Avg
UAB	1	0-0/.000	0-0/.000	0-0/.000	0-0-0	0-0	0	0	0	0	0	0/0.0
CH BAP	15	3-8/.375	2-7/.286	0-0/.000	0-3-3	1-0	0	1	0	1	0	8/4.0
Florida	1	0-0/.000	0-0/.000	0-0/.000	0-0-0	0-0	0	0	0	0	0	0/2.7
C. Car	1	0-2/.000	0-2/.000	0-0/.000	0-0-0	0-0	0	0	0	0	0	0/2.0
RMU	5	1-2/.500	1-2/.500	0-0/.000	0-0-0	2-0	0	0	1	0	0	3/2.2
La. Col	5	1-3/.333	1-3/.333	0-0/.000	0-0-0	0-0	0	0	0	0	0	3/2.3
NSU					DNP							
N.M.	1	0-1/.000	0-1/.000	0-0/.000	0-0-0	0-0	0	0	0	0	0	0/2.0
CE BAP	3	0-1/.000	0-1/.000	0-0/.000	0-0-0	0-0	0	0	0	0	1	0/1.8
LSU-A	0+	0-1/.000	0-1/.000	0-0/.000	0-0-0	0-0	0	0	0	0	0	0/1.6
Samford	2	0-0/.000	0-0/.000	0-0/.000	0-0-0	0-0	0	0	0	0	0	0/1.4
Ga. St.	5	1-2/.500	1-2/.500	0-0/.000	0-0-0	0-0	0	1	0	0	0	3/1.5
Ark. St.					DNP							
UTA	6	1-2/.500	1-2/.500	0-0/.000	0-1-1	1-0	0	0	0	0	0	3/1.7
TXST					DNP							
Troy												
UALR												
UL-L												
UTA												
Ga. So.												
Troy												
USA												
UALR												
Ga. So.												
UL-L												
App. St.												
Ark. St.												
USA												
App. St.												
Ga. St.												
TXST												
TBA												
Totals	39	6-20/.300	5-19/.263	0-0/.000	0-3-3	3-0	0	2	1	2	17/1.5	

#### 2014-15 (SOPHOMORE)

Netted a career-high eight points and hit a pair of three-pointers in a win over Champion Baptist... hit a three-pointer in an overtime win over UT Arlington... drilled a three-pointer and also rejected a shot against Robert Morris at the Battle 4 Atlantis

#### 2013-14 (FRESHMAN)

Redshirted... will still have four years of eligibility remaining

#### HIGH SCHOOL

Played three seasons at Sterlington High School ... Guided the Panthers to a 25-8 record as a senior and a second round appearance in the Louisiana High School Athletic Association playoffs ... Averaged 12 points and 3 assists per game his senior year ... Earned All-District honors from 2010-2013





# ULM Warhawks Men's Basketball

## University of Louisiana at Monroe



### 32 Justin Roberson

Junior | Guard | 6-1 | 185  
Natchitoches, La. | Western Texas

	Season-High	Career-High
Pts	19, vs. CEBC (12/16/14)	19, vs. CEBC (12/16/14)
FG	8, vs. CEBC (12/16/14)	8, vs. CEBC (12/16/14)
3FG	1, four times	1, four times
FT	6, at UAB (11/15/14)	6, at UAB (11/15/14)
Ast	6, vs. RMU (11/27/14)	6, vs. RMU (11/27/14)
Reb	7, two times	7, two times
Blocks	2, vs. RMU (11/27/14)	2, vs. RMU (11/27/14)
Steals	4, at TXST (1/10/15)	4, at TXST (1/10/15)
Min	32, two times	32, two times

Opp	GS	Min	FG-FGA/Pct.	3FG-FGA	FT-FTA/PCT	O-D-T	PF-FO	A	TO	Blk	Stl	Pts/Avg
UAB	*	32	6-11/.545	0-0/.000	6-6/1.000	1-3-4	1-0	5	1	0	2	18/18.0
CH BAP	*	15	4-5/.800	0-0/.000	1-2/.500	0-1-1	1-0	2	1	0	3	9/13.5
Florida	*	26	1-6/.167	0-1/.000	0-0/.000	0-1-1	5-1	0	3	0	2	2/9.7
C. Car	*	29	4-7/.571	1-3/.333	2-2/1.000	0-7-7	2-0	2	2	0	0	11/10.0
RMU	*	31	6-10/.600	0-2/.000	0-0/.000	0-4-4	3-0	6	3	2	0	12/10.4
La. Col	*	26	5-7/.714	0-1/.000	2-2/1.000	0-3-3	4-0	1	5	0	2	12/10.7
NSU	*	28	4-6/.667	0-1/.000	0-2/.000	0-3-3	4-0	2	3	0	1	8/10.3
N.M.	*	32	3-11/.273	0-1/.000	0-1/.000	0-4-4	0-0	1	2	0	2	6/9.8
CE BAP	*	31	8-12/.667	1-2/.500	2-2/1.000	0-4-4	2-0	4	0	0	2	19/10.8
LSU-A	*	30	2-6/.333	0-0/.000	2-3/.667	0-7-7	5-1	4	2	0	0	6/10.3
Samford	*	25	1-10/.100	1-1/1.000	0-0/.000	3-3-6	0-0	2	3	0	1	3/9.6
Ga. St.		13	0-5/.000	0-1/.000	0-1/.000	0-0-0	2-0	0	0	0	0	0/8.8
Ark. St.		19	4-7/.571	0-0/.000	2-3/.667	0-1-1	2-0	1	0	0	0	10/8.9
UTA		23	2-10/.200	1-3/.333	0-0/.000	1-5-6	5-1	1	1	0	0	5/8.6
TXST		17	5-9/.556	0-1/.000	0-0/.000	0-2-2	5-1	2	3	0	4	10/8.7
Troy												
UALR												
UL-L												
UTA												
Ga. So.												
Troy												
USA												
UALR												
Ga. So.												
UL-L												
App. St.												
Ark. St.												
USA												
App. St.												
Ga. St.												
TXST												
TBA												
<b>Totals</b>	<b>11</b>	<b>377</b>	<b>55-122/.451</b>	<b>4-17/.235</b>	<b>17-24/.708</b>	<b>5-48-53</b>	<b>41-4</b>	<b>33</b>	<b>29</b>	<b>2</b>	<b>19</b>	<b>131/8.7</b>

#### JUNIOR (2014-15)

Scored 10 points in conference games against Arkansas State and Texas State... career-high 19 points and eight made field goals in the win over Central Baptist... Reached double-figures with 12 points on 5-7 shooting against Louisiana College... registered a team and game-high of 18 points, including a perfect 6-6 FT, to go along with his five assists in a win over UAB... recorded a career-high three steals against Champion Baptist... netted 11 points and grabbed a career-high seven rebounds against Coastal Carolina... drained 12 points with a career-high six assists and two blocks against Robert Morris

#### PREVIOUS SCHOOL

Led Western Texas Junior College to a 23-8 record and averaged 14.2 points, 3.5 rebounds, 4.0 assists and 2.0 steals per game... named to the All-Western Texas Conference First-Team... memorable dunk over a 6-8 post player after driving down the lane

#### HIGH SCHOOL

Lettered in both basketball and football at Natchitoches Central HS and earned All-State in both sports

### Individual Career Totals for Returning Student-Athletes

*Only includes statistics at ULM*

#### Points

T. Ongwae	647
M. Williams	341
N. Coppola	321
D. Harvey	148
C. Amajoyi	101

#### Steals

T. Ongwae	42
N. Coppola	26
M. Williams	17
D. Harvey	16
C. Amajoyi	10

#### Field Goals M-A

T. Ongwae	229-528
M. Williams	139-267
N. Coppola	112-288
D. Harvey	60-109
C. Amajoyi	29-85

#### Free Throws M-A

T. Ongwae	170-199
M. Williams	61-96
N. Coppola	49-74
C. Amajoyi	28-38
D. Harvey	25-45

#### Rebounds

T. Ongwae	249
M. Williams	185
D. Harvey	151
N. Coppola	109
C. Amajoyi	75

#### Three-Pointers M-A

N. Coppola	48-130
T. Ongwae	30-116
C. Amajoyi	15-46
M. Williams	2-8

#### Assists

N. Coppola	157
T. Ongwae	82
C. Amajoyi	22
D. Harvey	22
M. Williams	17

#### Games/Starts

T. Ongwae	42/42
N. Coppola	42/42
D. Harvey	42/9
M. Williams	39/30
C. Amajoyi	32/15

#### Blocks

M. Williams	35
T. Ongwae	26
D. Harvey	21
C. Amajoyi	2

#### Minutes

N. Coppola	1415
T. Ongwae	1344
M. Williams	892
D. Harvey	624
C. Amajoyi	468

### ULM's 2014-15 Record When it Has...

#### Five Double-Figure Scorers (1-0)

vs. Northwestern State

#### Two Double-Figure Scorers (0-4)

at No. 8 Florida  
vs. Coastal Carolina  
vs. Robert Morris  
at Samford

#### Four Double-Figure Scorers (5-0)

at UAB  
vs. Champion Baptist  
vs. Louisiana College  
vs. Central Baptist  
vs. Arkansas State

#### No Double-Figure Scorers (0-2)

at New Mexico  
at Georgia State

#### Three Double-Figure Scorers (3-0)

vs. LSU-Alexandria  
at UT Arlington  
at Texas State



# ULM Warhawks Men's Basketball

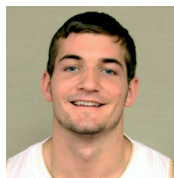
## University of Louisiana at Monroe



### Media Roster



**0 Marvin Williams**  
*REIGNING SBC PLAYER OF THE WEEK*  
*REIGNING CO-LOUISIANA PLAYER OF THE WEEK*  
Senior | Center  
6-8 | 245 | Memphis, Tenn.  
NW Florida State College



**11 Nick Coppola**  
Sophomore | Guard  
5-11 | 190  
Richmond, Va.  
Benedictine Prep



**1 Alex Brown**  
Freshman | Guard  
6-4 | 285  
Vernon, Fla.  
Vernon HS



**12 Tylor Ongwae**  
Senior | Forward  
6-7 | 205  
Eldoret, Kenya  
Ranger College



**2 DeMondre Harvey**  
Sophomore | Forward  
6-7 | 210  
Minden, La.  
Pearl River CC



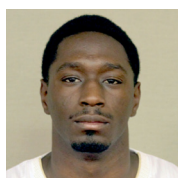
**13 Majok Deng**  
Junior | Forward  
6-10 | 190  
Adelaide, Australia  
Indian Hills CC



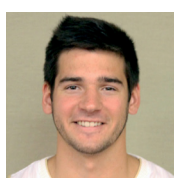
**3 Prince Cooper**  
Sophomore | Guard  
6-4 | 215  
Freeport, Bahamas  
Miami-Dade College



**20 Chinedu Amajoyi**  
Senior | Guard  
6-3 | 195  
Rancho Cucamonga, Calif.  
Kilgore College



**4 Mack Foster**  
Junior | Guard  
6-2 | 185  
Beulah, Miss.  
East Mississippi CC



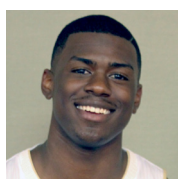
**22 Lance Richard**  
R-Freshman | Guard  
5-10 | 170  
Monroe, La.  
Sterlington HS



**5 Jamaal Samuel**  
Junior | Forward  
6-9 | 205  
New Orleans, La.  
Illinois State



**32 Justin Roberson**  
Junior | Guard  
6-1 | 185  
Natchitoches, La.  
Western Texas



**10 Roderick Taylor**  
Freshman | Forward  
6-8 | 210  
Harker Heights, Texas  
Harker Heights HS



**Head Coach Keith Richard**  
ULM '82  
Fifth Year at ULM  
14th Year Overall  
Baton Rouge, La.